



**BUSINESS  
BROCHURE**

DAHANG

**山东大航激光科技有限公司**

电话：0531-88733500

地址：中国·山东省济南市高新区高新万达写字楼J1-17A02

厂址：中国山东省济南市商河县许商街道兴隆街697号

SHANDONG DAHANG LASER TECHNOLOGY CO. LTD

Tel: +86-0531-88733500

Add: J1-17A02, Gaoxin Wanda Office Building, High-tech Zone,  
Jinan City, Shandong Province, China

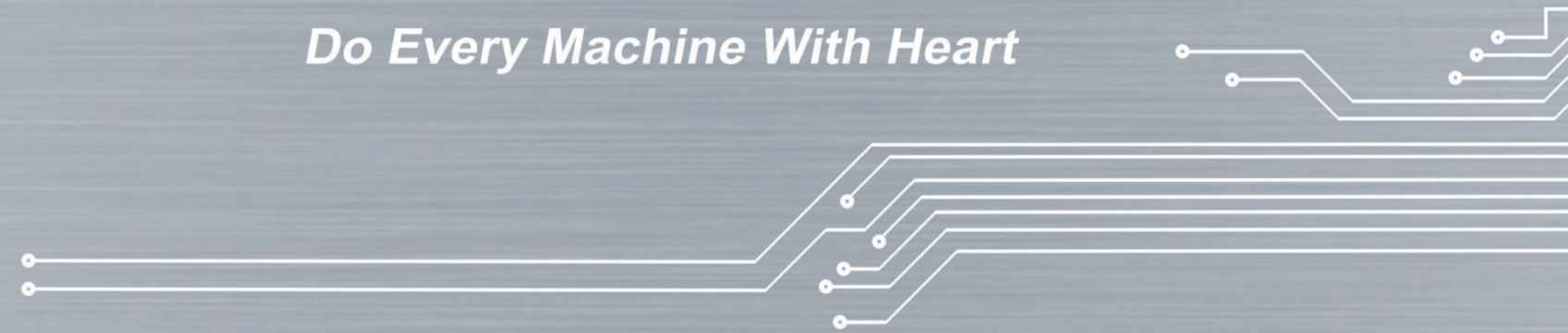
PLANT SITE: No. 697 Xinglong Street, Xushang Street, Shanghe  
County, Jinan City, Shandong Province, China

在路上  
共同精彩

ON THE ROAD,  
TOGETHER WONDERFUL

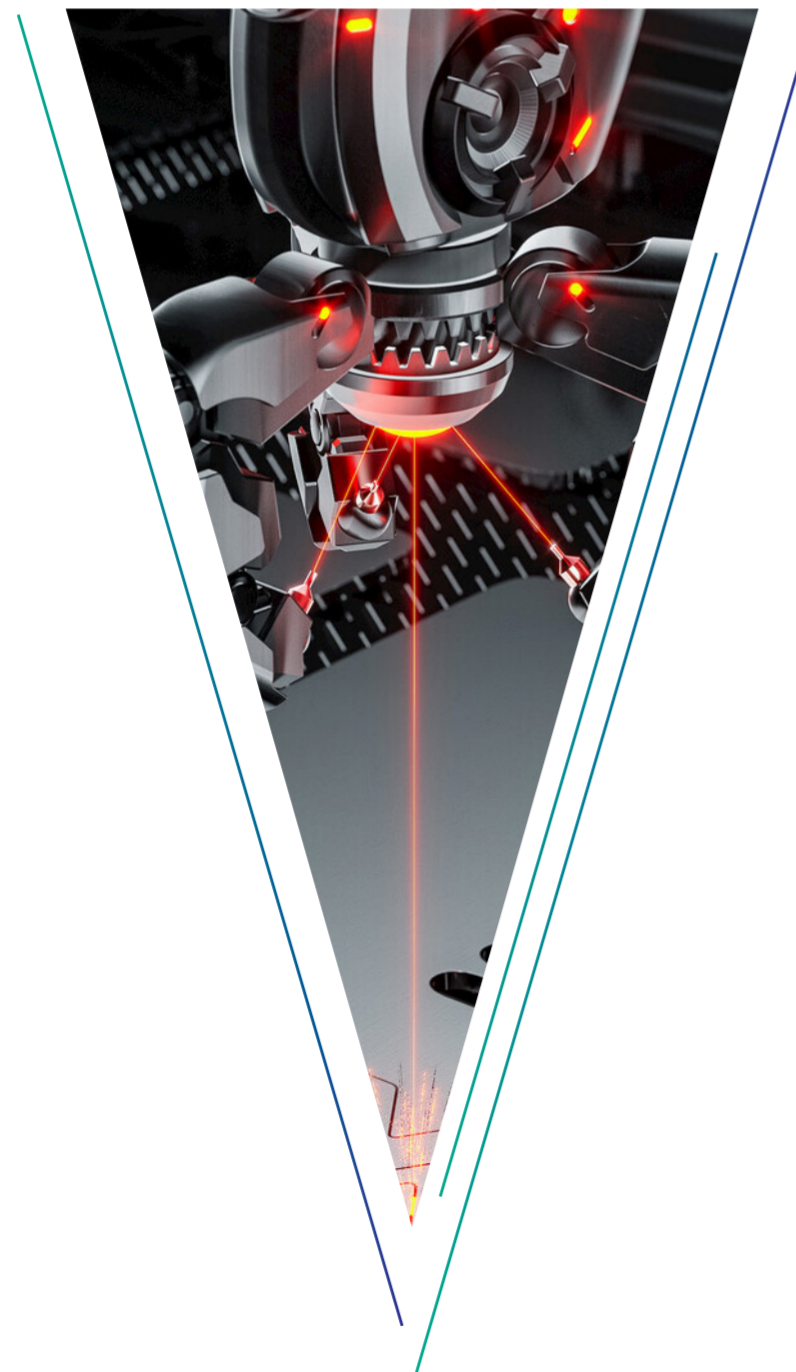
*Take The Customer As The Center,*

*Do Every Machine With Heart*



以 客 户 为 中 心 ， 用 心 做 好 每 一 台 机 器

Take The Customer As The Center, Do Every Machine With Heart



目录

# CONTENTS

- 02 企业简介  
Company Profile
- 04 企业文化  
Corporate culture
- 06 企业风采  
Corporate style
- 08 服务全球  
Serving the World
- 10 服务宗旨  
Service Tenet
- 11 专业团队  
professional team

- 13 激光切割机  
Laser cutting machine
- 42 切割参数  
Cutting parameters
- 44 切割样品  
Cutting samples
- 48 激光焊接机/清洗机  
Laser welding machine/cleaning machine
- 60 焊接/清洗参数  
Cutting samples
- 62 焊接/清洗样品  
Welfing/Cleaning Samples
- 64 合作伙伴  
Cooperative partner

# COMPANY PROFILE



Dahang Laser Technology Co., Ltd. is located in Jinan City, Shandong Province, focusing on the research and development, production, and sales of laser equipment. Since its establishment, the company has always adhered to the service philosophy of service as the foundation, quality as survival, technological innovation as development, and customer centricity, striving to provide excellent service for every machine.

Dahang Laser always regards "quality first, sincere service" as the core principle of the company, providing customers with excellent solutions in the field of laser welding. Our company has a full range of laser welding equipment production lines and has introduced advanced debugging and testing equipment in the laser industry. We follow the ISO system to ensure that every production process is stable and reliable, creating higher value for our customers. After years of effort, the human-machine design, functional design, and user experience of Dahang laser equipment have surpassed the level in the field of laser welding.

The company adheres to the product management philosophy of "quality, efficiency, innovation, and service", and is committed to becoming an excellent supplier of laser equipment in China. At present, the main products produced by the company include handheld laser welding machines, laser cleaning machines, fully automatic platform welding machines, high-power laser welding machines, portable laser welding machines, air-cooled integrated welding, pulse cleaning machines, laser pipe cutting machines, laser cutting machines, etc., forming a complete laser welding series. Opportunities and challenges coexist, exploration and harvest coexist. In the future, we will strive for development through innovation, enhance customers' experience of using machines with high-quality products and excellent services.

Create value for customers, partners, and society through an honest and efficient business model.

We have a large inventory of handheld laser welding machines and laser cleaning machines, and specialize in undertaking national agency, OEM, and OEM services. We welcome customers and friends to visit our company for guidance and negotiation, and we will be dedicated to serving you!

大航激光科技有限公司坐落于山东省济南市，专注于激光设备的研发、生产和销售。自公司成立以来始终秉承着以服务为基础、以质量为生存、以科技创新为发展、坚持以客户为中心，用心做好每一台机器的服务理念。

大航激光始终把“质量为本、真诚服务”当作公司的核心准则，为客户提供激光焊接领域优良的解决方案。我公司拥有全系列的激光焊接设备生产线，并引进激光行业先进的调试检测设备，依照ISO体系把关每一个生产环节，确保每一台出厂设备能够稳定可靠，为客户创造更高的价值。经过多年努力，大航激光设备的人机设计、功能设计、用户体验已高于激光焊接领域水平。

公司秉持“品质、效率、创新、服务”的产品经营理念，立志成为国内激光设备优良供应商。目前公司生产的主要产品包括：手持激光焊接机、激光清洗机、全自动平台焊接机，大功率激光焊接机，便携式激光焊接机、风冷一体焊、脉冲清洗机、激光切管机、激光切割机、等形成了完整的激光焊系列。机遇与挑战并存，探索与收获同在。未来，我们将以创新求发展，以优质的产品和卓越的服务，提升客户的用机感受。以诚信、高效的经营模式为客户、合作伙伴和社会创作价值。

手持激光焊接机、激光清洗机大量现货，专业承接全国代理、贴牌、OEM.欢迎广大客户朋友前来我公司莅临指导、洽谈，我们将竭诚为您服务!

企业文化

# CORPORATE CULTURE

**01** 愿景与使命/VISION AND MISSION  
以客户为中心、用心做好每一台机器  
Take The Customer As The Center, Do Every Machine With Heart

**02** 核心价值观/Core Values  
为客户创造价值、用创新追求卓越  
Customer Value Creation, Innovation for Excellence

**03** 企业精神 /Enterprise Spirit  
精工品质、满意国际  
Precision Quality, Global Satisfaction

**04** 为人精神 /Spirit of Integrity  
真诚善良、积极向上  
Sincere, Kind, Positive, Aspiring

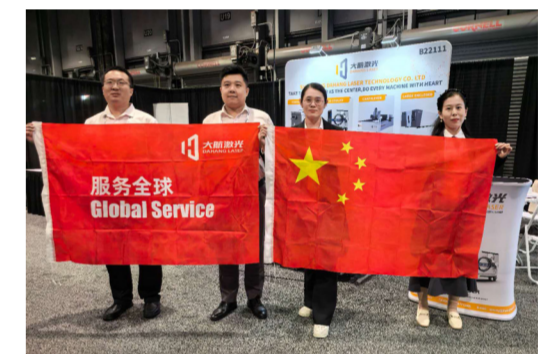
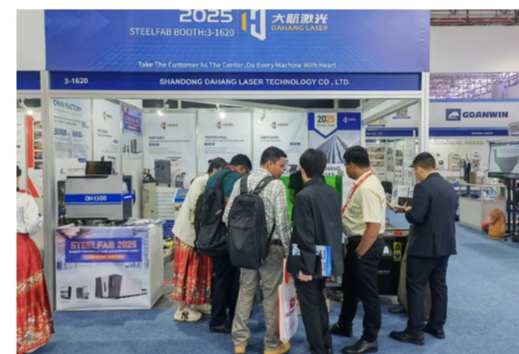
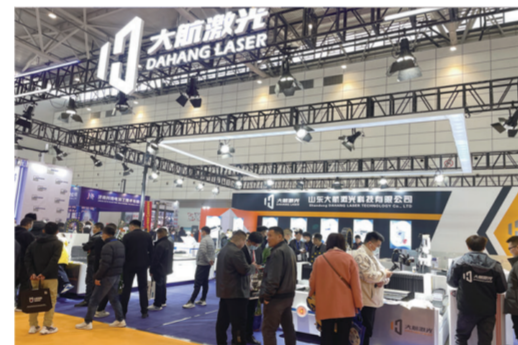
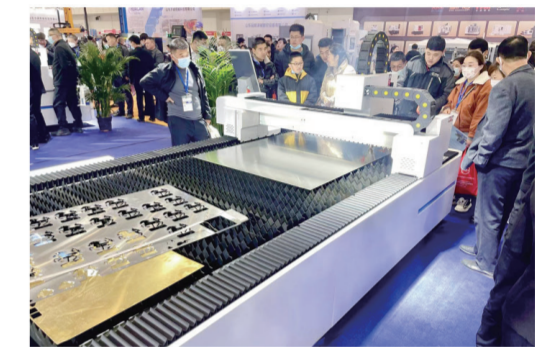
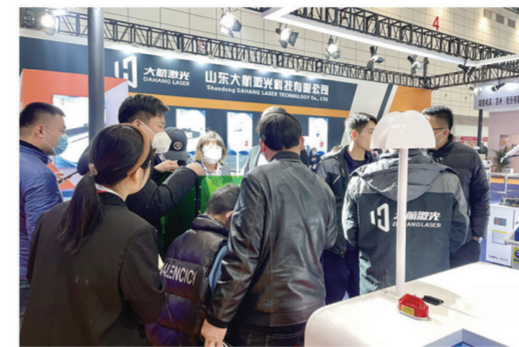
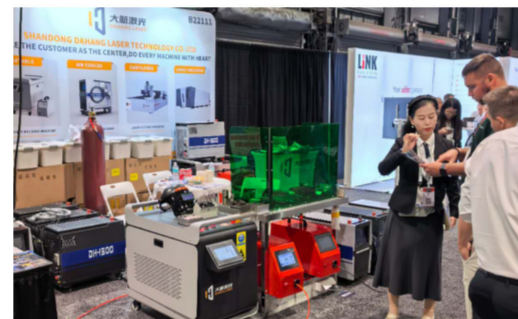
**05** 管理理念/Management Philosophy  
积极、探索、务实、创新  
Positive, Exploratory, Pragmatic, Innovative

**06** 服务理念/Service Philosophy  
真诚服务、满意客户  
Sincere Service, Satisfied Customers

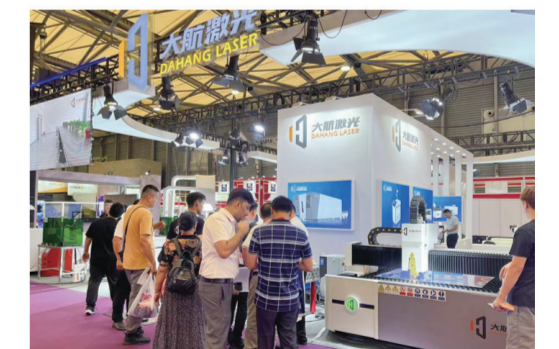
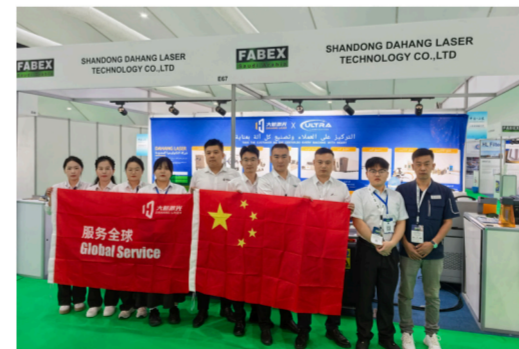
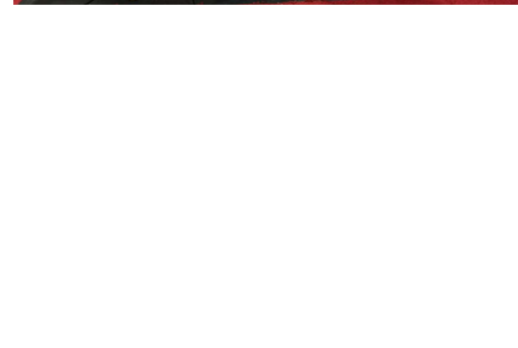
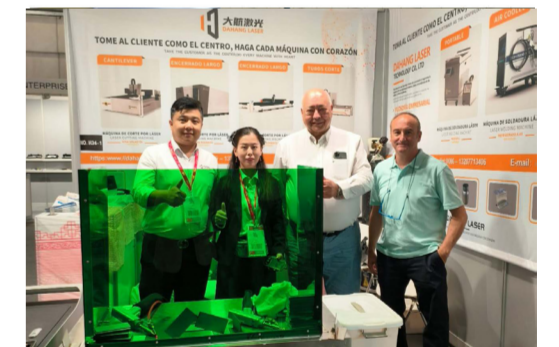
企业风采

# CORPORATE STYLE

## 合作 COOPERATION



## WIN-WIN 共赢



合作共赢 服务全球

# WIN WIN COOPERATION AND GLOBAL SERVICES

数年来，大航激光以精湛的技术为基础，以合作共赢为桥梁，以产品质量和服务去赢取广大海外客户的青睐。产品已涵盖全国，远销北美、南美、欧洲、东南亚、中东等多个国家和地区

Over the years, Dahang Laser has won the favor of a large number of overseas customers with its exquisite technology as the foundation, win-win cooperation as the bridge, and product quality and service. Our products have covered the whole country and are exported to many countries and regions in North America, South America, Europe, Southeast Asia, the Middle East and so on.

服务宗旨

# SERVICE PRINCIPAL



全球海外客户上门服务  
Global overseas customer  
doorstep service



全球联保，终身提供维护服务。  
Global warranty, providing  
maintenance services for life.



24小时在线免费服务。  
24-hour online free service.

专业团队

# SERVICE TEAM



## 专业

精英群落，用拼搏印证理想  
Elite community, verifying ideals through hard work

## 准确

始终为客户追寻最完美解决方案  
Always pursuing the most perfect solution for customers

## 实力

为梦想的起飞保驾护航  
Escort the takeoff of dreams

## 渠道

汇集优质资源，高效运作平台  
Gather high-quality resources and operate the platform efficiently





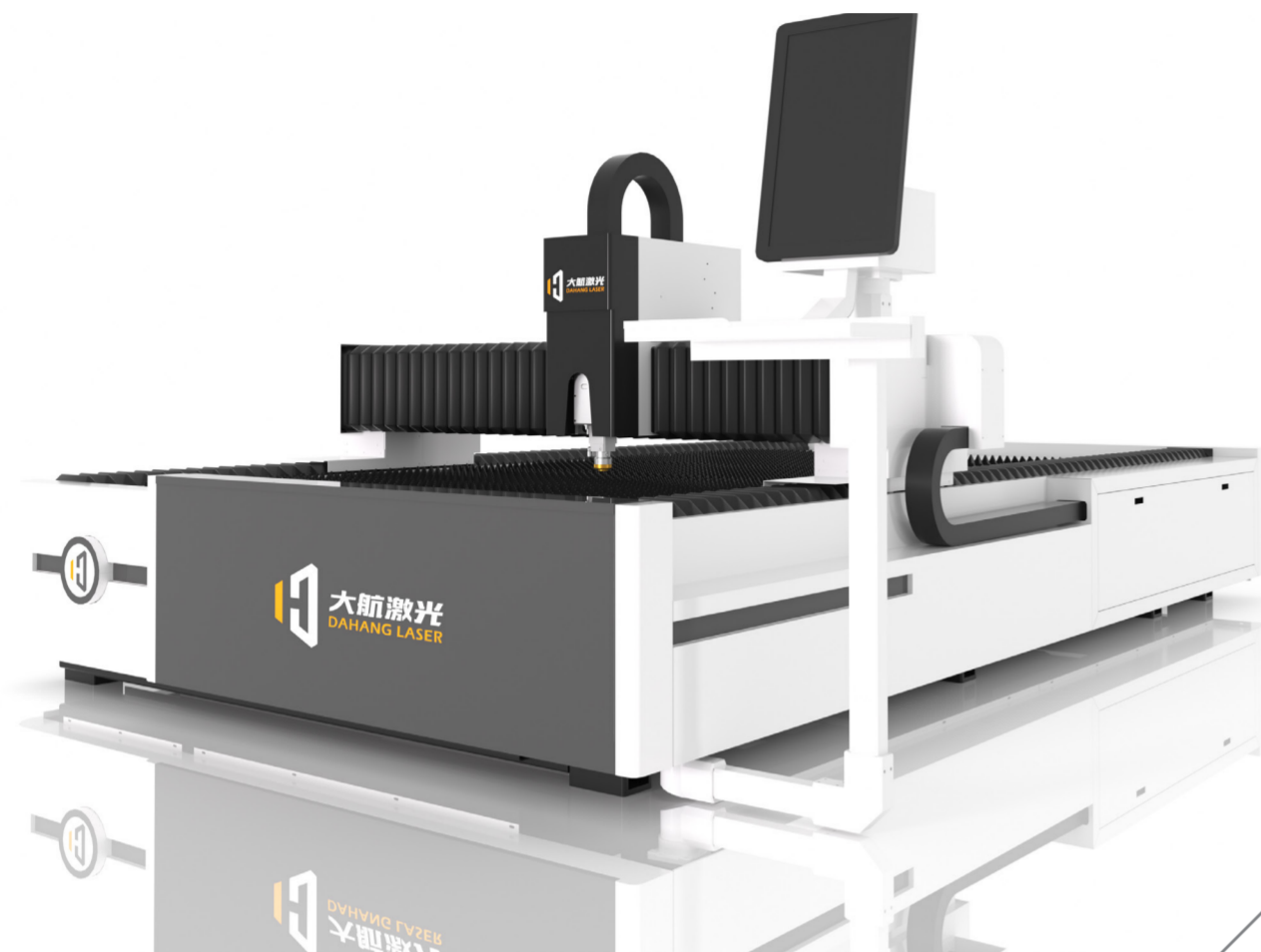
**大航激光**

产品中心

**PRODUCT  
CENTER**

• F系列单平台光纤激光切割机

F series Single-platform fiber laser cutting machine



功能特点  
FEATURES

- 极高的光电转换效率：光纤激光器的光电转换效率高达30-50%，能耗低。
- 卓越的切割性能：光束质量极佳，切割更精密切割面更佳，切割速度快。
- 运行稳定可靠，维护成本低。
- 高集成度与灵活性：结构紧凑，易于升级，适合自动化

- ▷ Extremely High Photoelectric Conversion Efficiency: Fiber lasers boast photoelectric conversion efficiencies of 30-50%, resulting in low energy consumption.
- ▷ Superior Cutting Performance: Excellent beam quality leads to more precise cutting, superior cut surfaces, and faster cutting speeds.
- ▷ Stable and Reliable Operation with Low Maintenance Costs
- ▷ High Integration and Flexibility: Compact structure, easy to upgrade, and suitable for automation.

• 产品展示 PRODUCT DISPLAY



• 产品参数 SPECIFICATION

型号	Model	DH-3015	DH-4020	DH-6025
切割范围	Cutting range	3000*1500mm	4000*2000mm	6000*2500mm
激光功率	Laser power	3000-120000W		
重复定位精度	Repositioning accuracy	0.03mm		
最大移动速度	Max.moving speed	120m/min		

• C系列单平台光纤激光切割机

C series Single-platform fiber laser cutting machine



功能特点

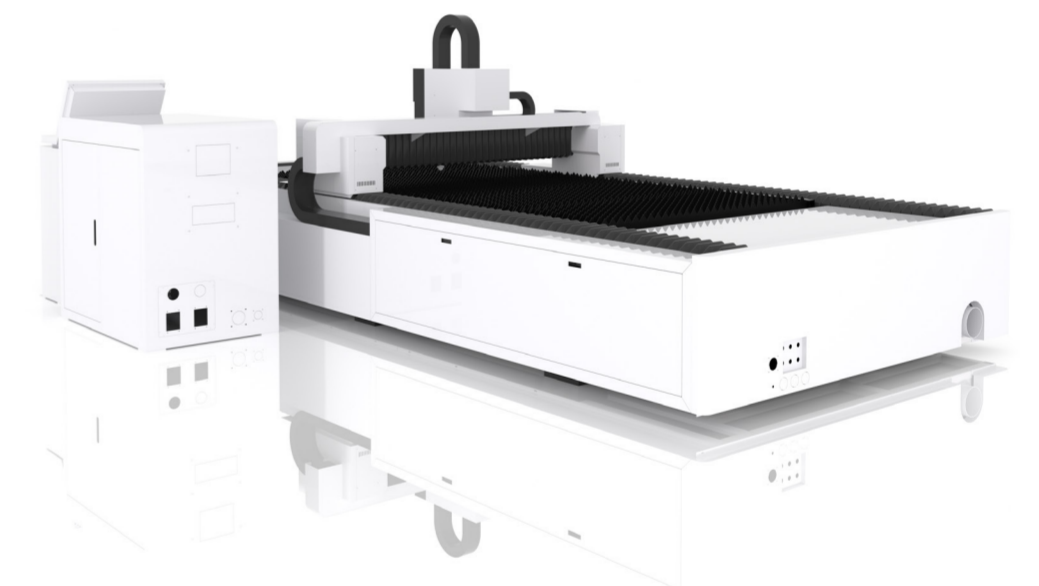
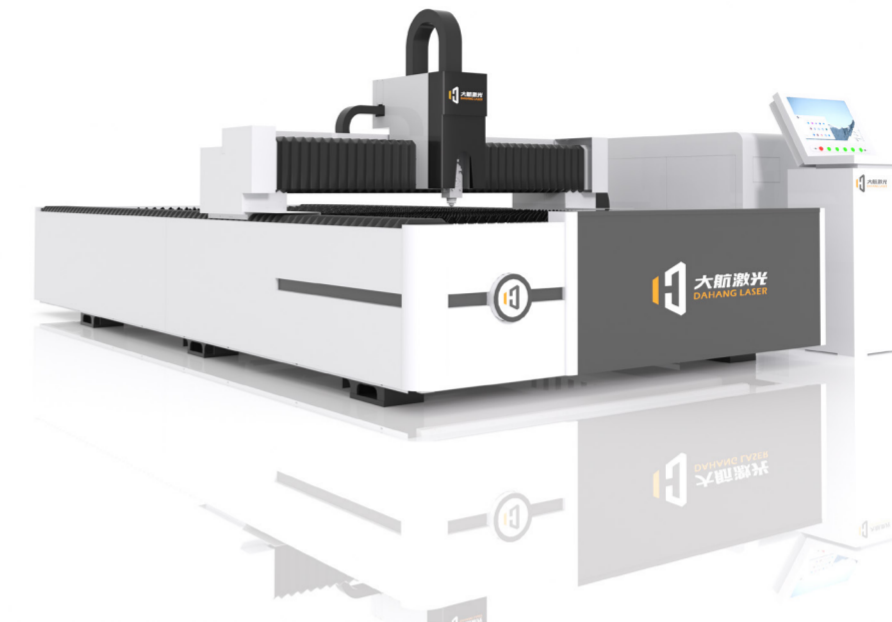
FEATURES

- 极高的光电转换效率：光纤激光器的光电转换效率高达30-50%，能耗低。
- 卓越的切割性能：光束质量极佳，切割更精密切割面更佳，切割速度快。
- 运行稳定可靠，维护成本低。
- 高集成度与灵活性：结构紧凑，易于升级，适合自动化

- ▷Extremely High Photoelectric Conversion Efficiency: Fiber lasers boast photoelectric conversion efficiencies of 30-50%, resulting in low energy consumption.
- 2. Superior Cutting Performance: Excellent beam quality leads to more precise cutting, superior cut surfaces, and faster cutting speeds.
- 3. Stable and Reliable Operation with Low Maintenance Costs.
- 4. High Integration and Flexibility: Compact structure, easy to upgrade, and suitable for automation.

• 产品展示

PRODUCT DISPLAY



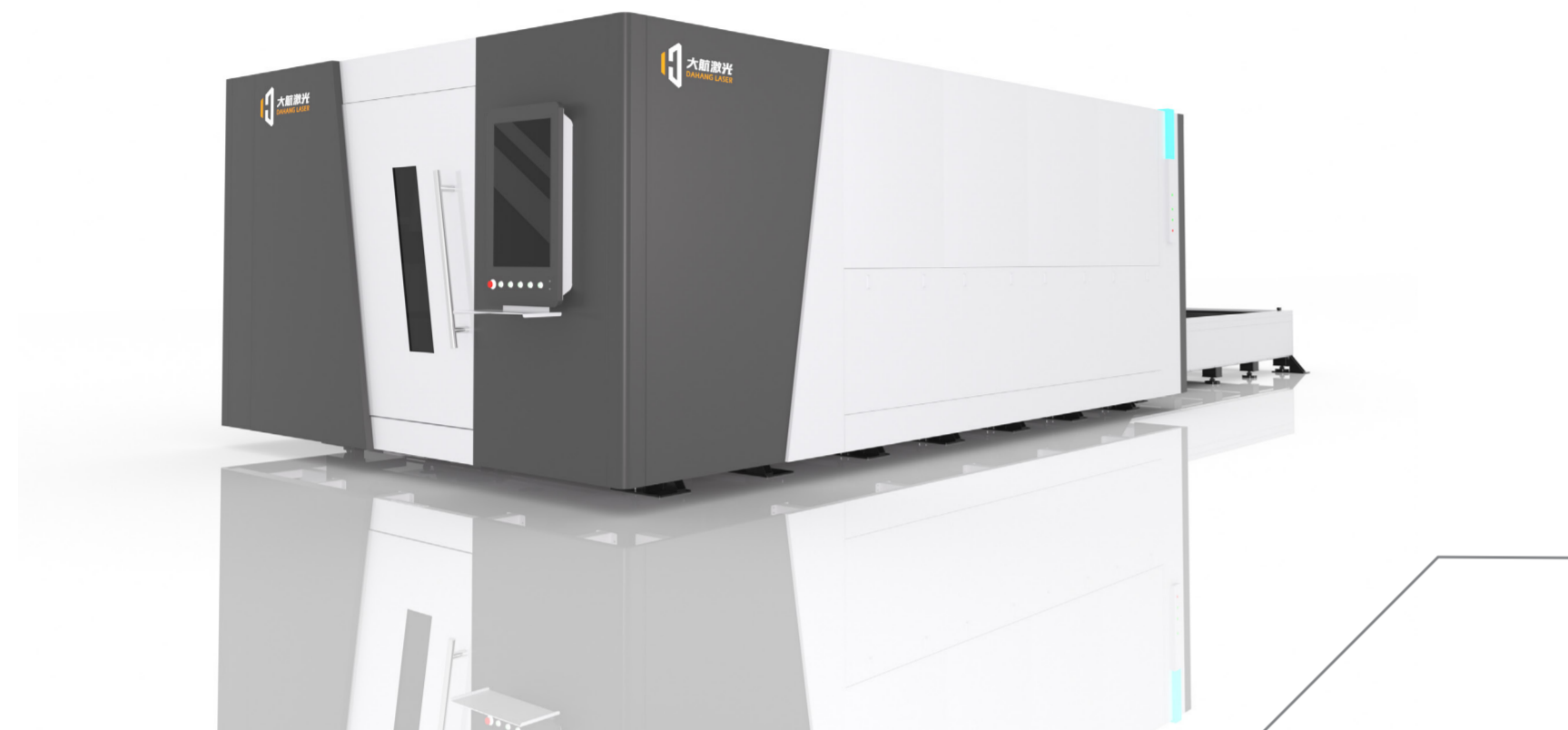
• 产品参数

SPECIFICATION

型号	Model	DH-3015	DH-4020	DH-6025
切割范围	Cutting range	3000*1500mm	4000*2000mm	6000*2500mm
激光功率	Laser power	3000-120000W		
重复定位精度	Repositioning accuracy	0.03mm		
最大移动速度	Max.moving speed	120m/min		

• H系列大包围光纤激光切割机

H series Fully protective sheet laser cutting machine



功能特点

FEATURES

- 全封闭或半封闭的外壳，全包围外壳有效隔离激光辐射、金属粉尘和噪音，安全性高。
- 适用于不锈钢、碳钢、铝合金、铜等高反射材料的精密加工。
- 高动态性能，多轴联动，支持三维切割（选配），满足异形工件加工需求。

▷ Fully enclosed or semi-enclosed enclosures, fully enclosed enclosures effectively isolate laser radiation, metal dust and Low noise and high safety.

▷ It is suitable for precision processing of high-reflective materials such as stainless steel, carbon steel, aluminum alloy and copper.

▷ High dynamic performance, multi-axis linkage, support for 3D cutting (optional), meeting the processing requirements of irregular-shaped workpieces.

• 产品展示

PRODUCT DISPLAY



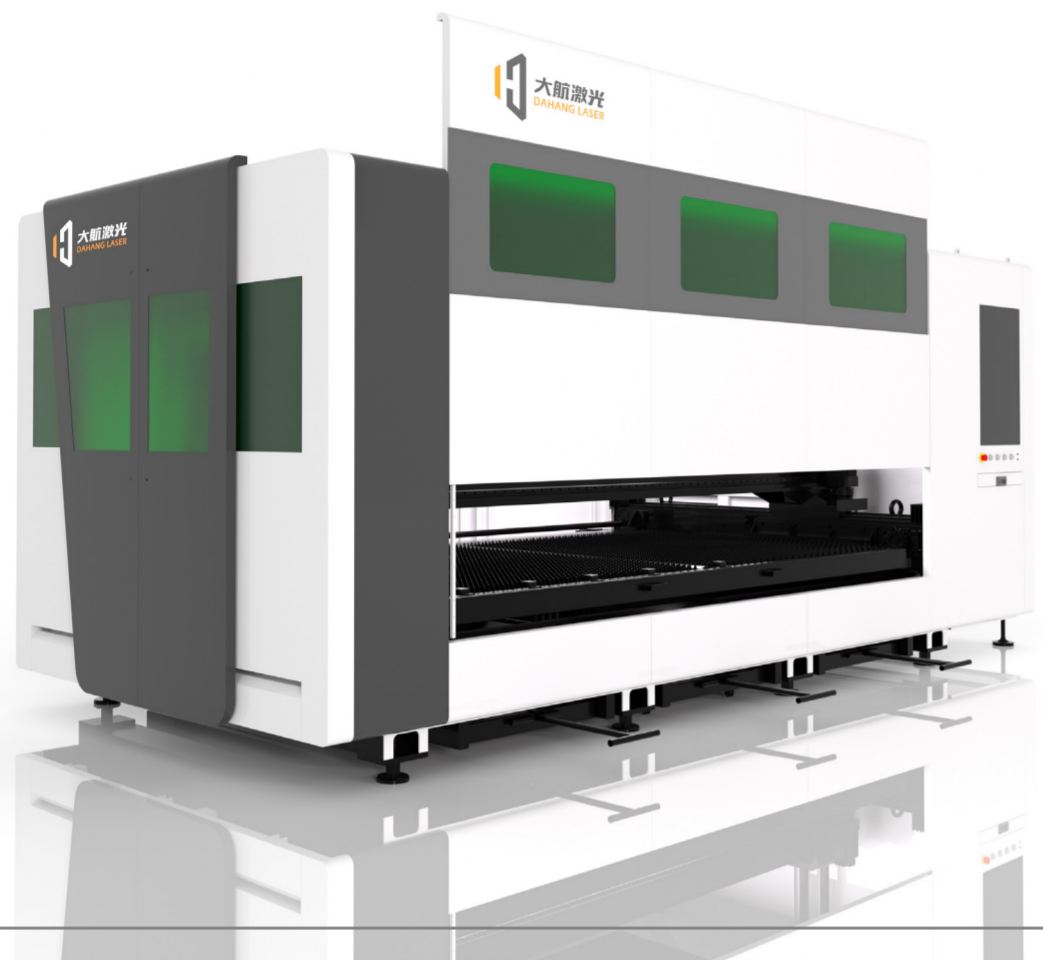
• 产品参数

SPECIFICATION

型号	Model	DH-3015	DH-6025	DH-12025
切割范围	Cutting range	1500*3000mm	2500*6000mm	2500*12000mm
激光功率	Laser power	3000-120000W		
重复定位精度	Repositioning accuracy	±0.03mm		
最大移动速度	Max.moving speed	120m/min		

• D系列单平台全包围激光切割机

D series metal sheet laser cutting machine



功能特点

FEATURES

- 全封闭式设计（大包围）配备侧拉门，有效隔离激光辐射、金属粉尘和噪音，稳定可靠的机械结构。
- 侧拉门设计节省空间，方便操作人员快速上下料，操作便捷。
- 智能化控制系统，支持图形导入、自动寻边、蛙跳切割等智能功能。

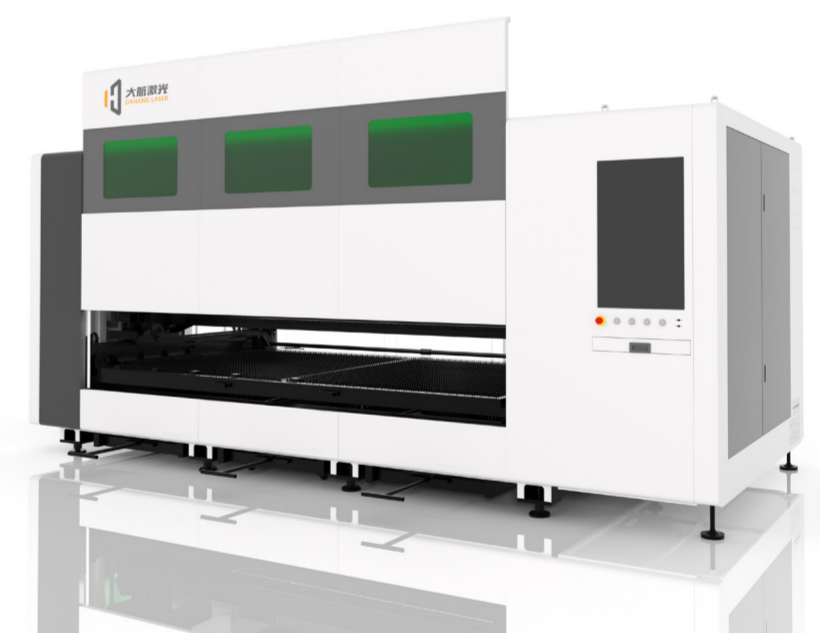
▷The fully enclosed design (full enclosure) is equipped with side sliding doors, effectively isolating laser radiation and metal dust and noise reduction, stable and reliable mechanical structure.

▷The side sliding door design saves space, facilitating the quick loading and unloading of materials by operators and making the operation convenient.

▷The intelligent control system supports intelligent functions such as graphic import, automatic edge finding, and frog jump cutting.

• 产品展示

PRODUCT DISPLAY



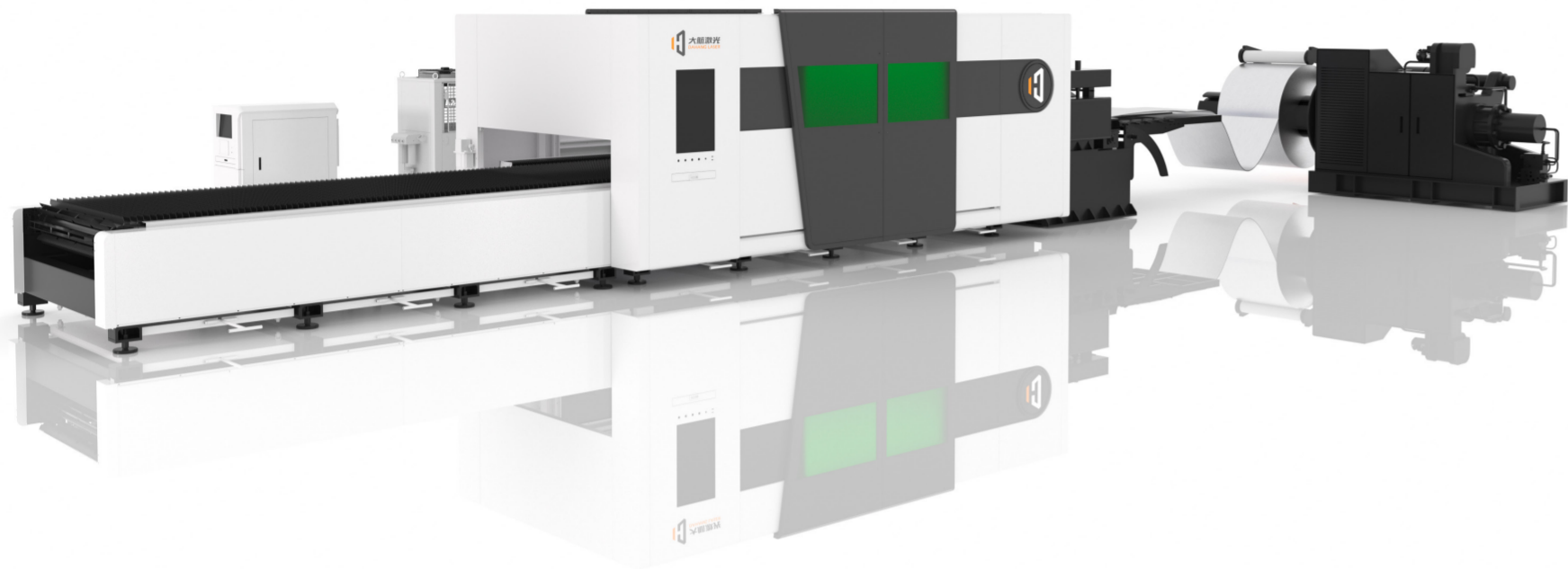
• 产品参数

SPECIFICATION

型号	Model	DH-3015	DH-2513
切割范围	Cutting range	1500*3000mm	1300*2500mm
激光功率	Laser power	3000W~20000KW	
重复定位精度	Repositioning accuracy	±0.03mm	
最大移动速度	Max.moving speed	120m/min	

• 自动卷材激光切割机

Automatic Coiled Sheet Laser Cutting Machine



功能特点

FEATURES

- 标准双工位开卷机，最多可选配 6 个开卷工位，可装载各种不同材质和厚度的物料，无需因工位限制而停机更换材料。这节省了时间和精力，提高了生产效率。
- 板材边缘抗震稳定切割。凭借强大的算法，能够适应薄板因气压引起的高频振动。激光头灵敏度经过智能调节，确保切割始终稳定，从而保证切割质量和效率。
- 该尺寸最大程度地减少了卷材激光切割机的冗余，1250毫米的尺寸完美地节省了占地面积。可选工件接收平台可及时输送工件，方便自动分拣。

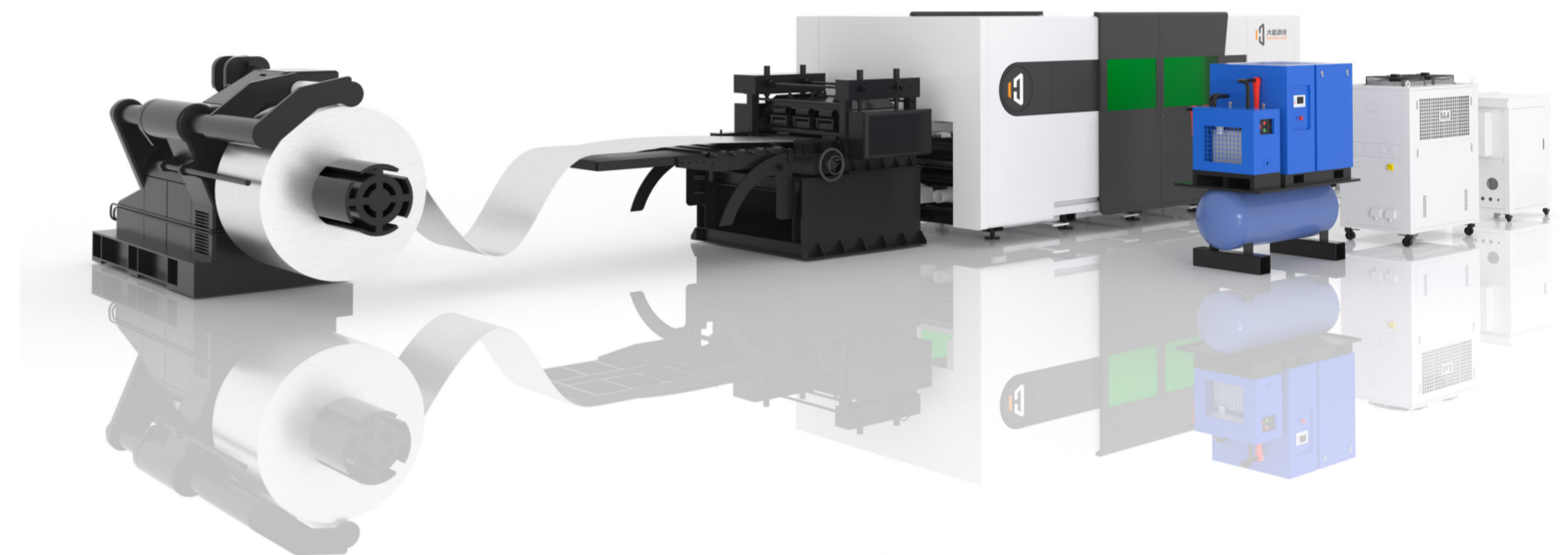
▷Standard dual-station uncoiler, with up to 6 optional uncoiler stations, allows for loading various materials and thicknesses, without stopping for material changes due to station limitations. It saves time and effort, improving production efficiency.

▷Sheet Edge Anti-Vibrating Stable Cutting. Through the powerful algorithm, it is able to adapt to the high-frequency vibration of thin sheets due to air pressure. The laser head sensitivity is intelligently adjusted, ensuring consistently stable cutting, thereby guaranteeing both cutting quality and efficiency.

▷The ultimate size reduces redundancy in the coiled sheet laser cutting machine. The 1250mm size perfectly saves floor space. Optional workpieces receiving platform transports workpieces timely, facilitating sorting automatically.

• 产品展示

PRODUCT DISPLAY



• 产品参数

SPECIFICATION

型号	Model	DH-3015	DH-4015	DH-6020
切割范围	Cutting range	1500*3000mm	1500*4000mm	2000*6000mm
激光功率	Laser power	3000-120000W		
重复定位精度	Repositioning accuracy	±0.03mm		
最大移动速度	Max.moving speed	120m/min		

• CT系列板管一体光纤激光切管机

CT series fiber laser metal sheet&tube cutting machine



功能特点  
FEATURES

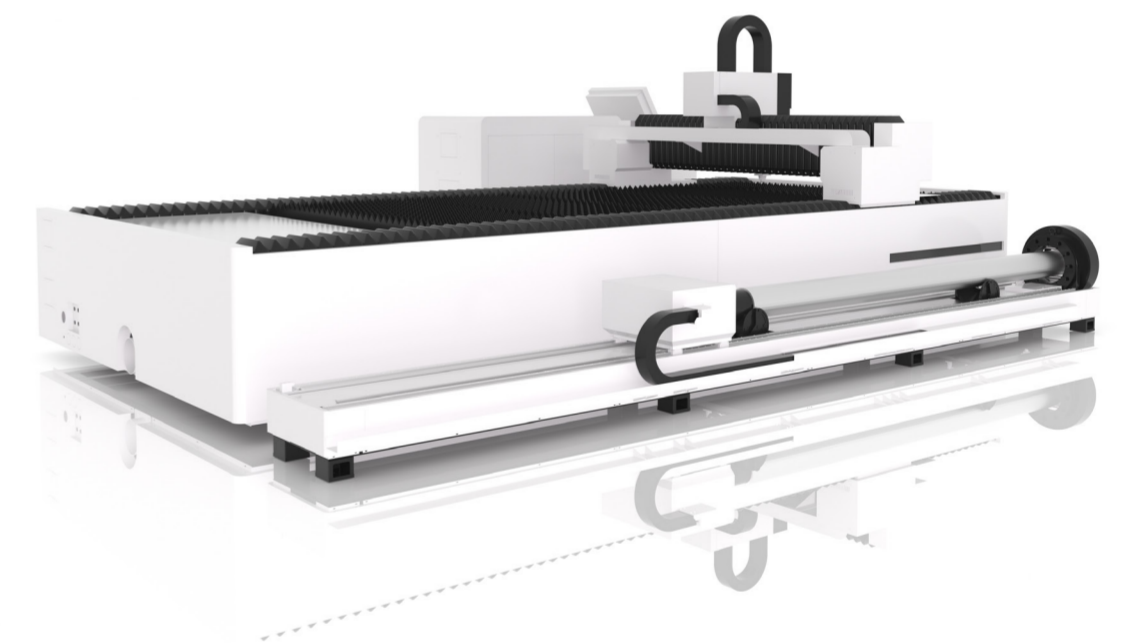
- 转盘两侧采用气动夹紧设计，中心自动调节。
- 双功能设计，既能切割平板材，又能切割各种管材（圆管、方管、矩形管、异型管等）高精度高效率·智能控制系统，嵌套软件，操作简单。
- 板式焊接重型工作台，传动稳定。

▷The two sides of the turntable are designed with pneumatic clamping, and the center can be automatically adjusted.

▷Dual-function design, capable of cutting both flat plates and various types of pipes (round pipes, square pipes, rectangular pipes, special-shaped pipes, etc.). High-precision and high-efficiency intelligent control system, nested software, and simple operation.

▷Plate-type heavy-duty welding workbench with stable transmission.

• 产品展示 PRODUCT DISPLAY



• 产品参数 SPECIFICATION

型号	Model	DH-3015	DH-4020	DH-6025
切割范围	Cutting range	3000*1500mm	4000*2000mm	6000*2500mm
激光功率	Laser power	3000-120000W		
重复定位精度	Repositioning accuracy	0.03mm		
最大移动速度	Max.moving speed	120m/min		

• HT系列板管一体大包围光纤激光切割机

HT series fiber laser sheet & tube metal cutting machine with cover



功能特点  
FEATURES

- 多功能一体化加工，可同时切割平板材，提升加工灵活性，减少设备投入和占地面积，降低企业采购和管理成本。
- 高功率光纤激光器，优化穿孔时间，提升效率。
- 板管一体大包围光纤激光切割机通过集成化设计、智能化控制和高效激光技术。

▷The multi-functional integrated processing can simultaneously cut flat plates, enhancing processing flexibility, reducing equipment investment and floor space, and lowering the procurement and management costs for enterprises.

▷High-power fiber laser, optimizing perforation time and enhancing efficiency.

▷The plate and tube integrated large enclosure fiber laser cutting machine is designed through integrated design, intelligent control and efficient laser technology.

• 产品展示 PRODUCT DISPLAY

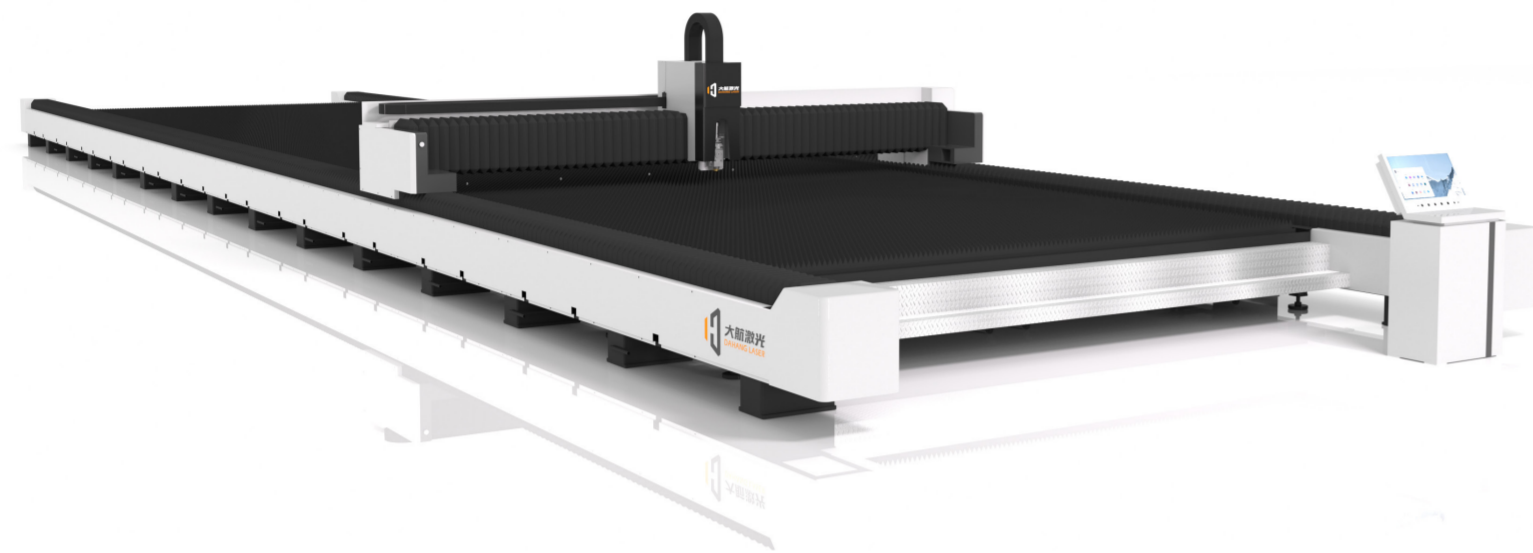


• 产品参数 SPECIFICATION

型号	Model	DH-3015	DH-6025	DH-12025
切割范围	Cutting range	3000*1500mm	6000*2500mm	12000*2500mm
激光功率	Laser power	3000-20000W		
重复定位精度	Repositioning accuracy	0.03mm		
最大移动速度	Max.moving speed	120m/min		

• LM系列光纤激光切割机

LM series gantry type fiber laser cutting machine



功能特点

FEATURES

- **加工能力强:** 可实现超大幅面、超长板材的一次性切割，避免拼接和重复定位，特别适合大型结构件和厚板加工。
- **生产效率高:** 支持高功率激光和多头配置，切割速度快、产能高，可显著提升加工效率和订单交付能力。
- **精度与稳定性好:** 机身刚性高、运行平稳，配合智能控制系统和自动调焦技术，切割精度高、质量稳定，适合对尺寸和断面质量要求严格的行业。

▷ **Strong processing capability:** It can achieve one-time cutting of ultra-large and extra-long plates, avoiding splicing and repeated positioning, and is especially suitable for processing large structural parts and thick plates.

▷ **High production efficiency:** It supports high-power lasers and multi-head configurations, featuring fast cutting speed and high productivity, which can significantly improve processing efficiency and order delivery capacity.

▷ **Good precision and stability:** The machine has high rigidity and stable operation. Combined with an intelligent control system and auto-focus technology, it ensures high cutting accuracy and stable quality, making it suitable for industries with strict requirements on dimensions and section quality.

• 产品展示

PRODUCT DISPLAY



• 产品参数

SPECIFICATION

型号	Model	DH-12025	DH-14032	DH-25032
切割范围	Cutting range	12000*2500mm	14000*3200mm	25000*32000mm
激光功率	Laser power	6000-120000W		
重复定位精度	Repositioning accuracy	0.03mm		
最大移动速度	Max.moving speed	100m/min		

• 机器人光纤激光切割机

Robot fiber laser cutting machine



功能特点

FEATURES

- 结合了工业机器人的灵活性和光纤激光切割的高效性。
- 激光聚焦精细，重复定位精度高，实现复杂轮廓的稳定切割。
- 成本运营低，能耗低，维护简单。
- 与传统切割方式对比，机器人支持三维能力切割，精度极高、速度快。

- ▷ It combines the flexibility of industrial robots with the efficiency of fiber laser cutting.
- ▷ Laser focusing is fine, with high repeat positioning accuracy, achieving stable cutting of complex contours.
- ▷ Low operating costs, low energy consumption and simple maintenance.
- ▷ Compared with traditional cutting methods, robots support three-dimensional cutting capabilities, featuring extremely high precision and fast speed.

• 产品展示

PRODUCT DISPLAY



• 产品参数

SPECIFICATION

型号	Model	DH-3000WRT
加工轴	Processing axis	6
基本负荷	Base load	114KG
最大载荷	Maximum load	28KG
进出规格	Entry and exit specifications	1.6m/1.8m/2.0m
激光功率	Laser power	3000W

• 全自动化大包围机器

Fully Automatic Loading and unloading metal sheet cutting machine



功能特点

FEATURES

- **同步加载**，突破了传统行业装卸作业无法同时进行的限制。
- **智能分区**，可以装载不同尺寸的纸张，只需单击一下即可调整纸张尺寸，从而大大减少了人工干预。
- **排队处理**，可以对不同形状和厚度的板材进行自动排队处理。
- **错误警告**，具备物料检测、缺料报警和物料数量异常报警功能，可降低废品率。

▷ **Smart Zoning** The machine breaks through the traditional industry limitation where loading and unloading cannot be done in parallel.

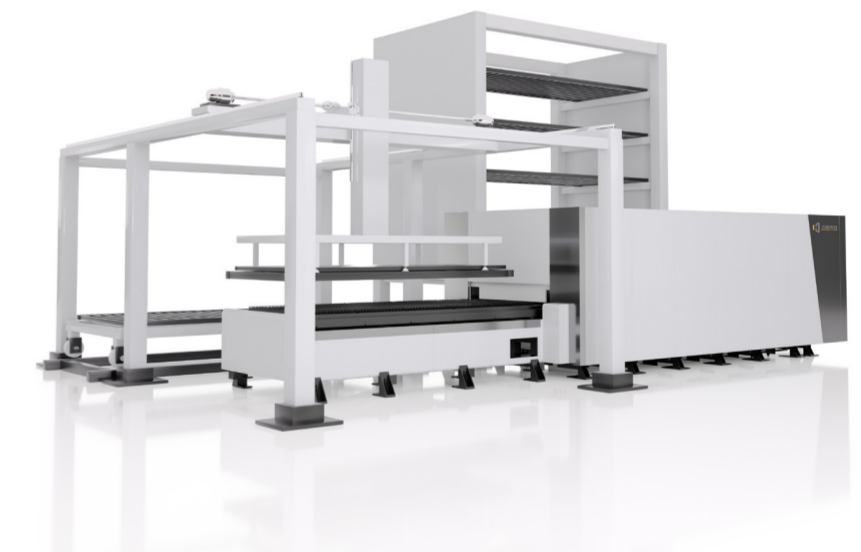
▷ **Intelligent partitioning** The machine can load different-sized sheets and sheets can be adjusted with just a single click, which greatly reduces manual intervention.

▷ **Queued Processing** The machine can conduct automatic queued processing for different shapes and thicknesses of sheets.

▷ **Error Warning** With material detection, shortage alarms and abnormal material quantity alarms, the iTrans can reduce scrap rates.

• 产品展示

PRODUCT DISPLAY



• 产品参数

SPECIFICATION

型号	Model	DH-3015
切割范围	Cutting range	3000*1500mm
激光功率	Laser power	3000-60000w
重复定位精度	Repositioning accuracy	0.03mm
最大移动速度	Max.moving speed	120m/min

• T系列光纤激光切管机

T series professional fiber laser tube cutting machine



• 产品展示

PRODUCT DISPLAY

功能特点

FEATURES

- 两个独立卡盘协同合作，确保长管材在切割过程中的高稳定性。
- 高效率、高精度、灵活性和安全性强。
- 自动化上下料机械手或输送带实现管材的连续供料和成品收集。

▷ Two independent chucks work in coordination to ensure high stability of long pipes during the cutting process.

▷ High efficiency, high precision, strong flexibility and safety.

▷ Automated loading and unloading manipulators or conveyor belts are used to continuously supply pipes and collect finished products.

• 产品参数

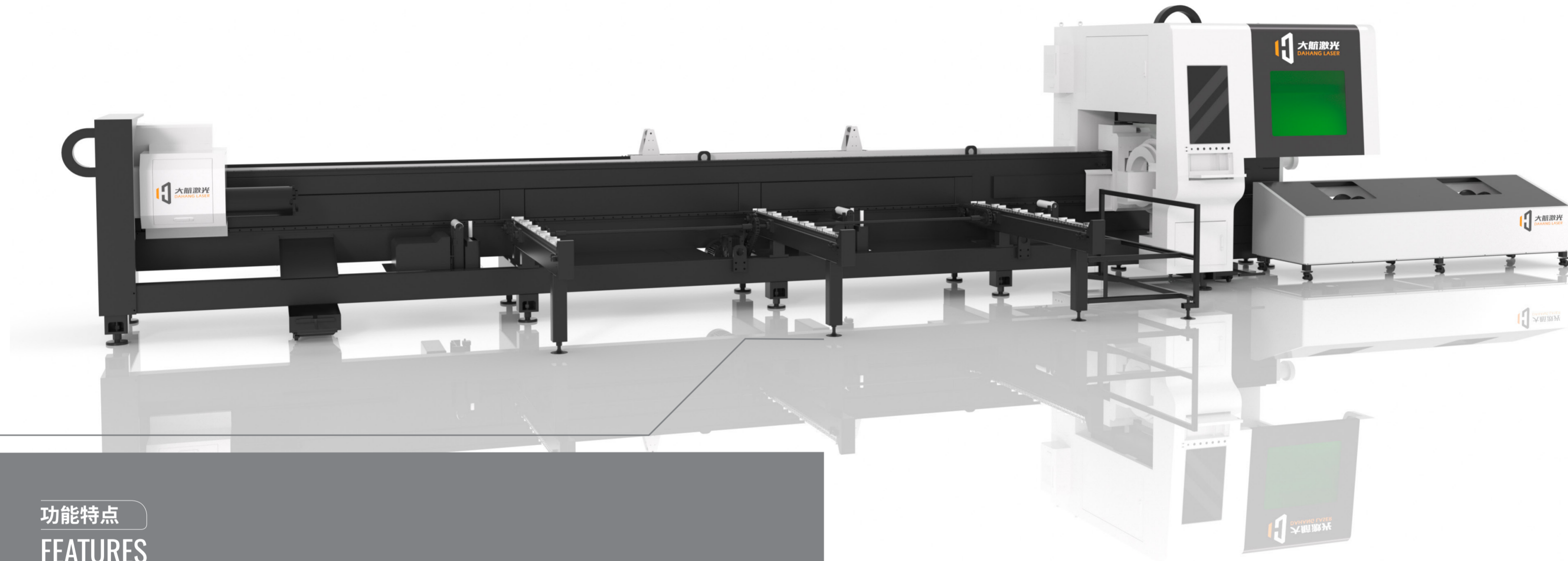
SPECIFICATION

型号	Model	DH-6012	DH-6023	DH-6035	DH-12055
切割范围	Cutting range	φ120	φ230	φ350	φ550
激光功率	Laser power	3000-30000W			
重复定位精度	Repositioning accuracy	0.05mm			
最大移动速度	Max.moving speed	50m/min			60m/min

• 自动上下料两卡盘切管机

Fully automatic loading tube cutting machine

• 产品展示 PRODUCT DISPLAY



功能特点

FEATURES

- 通过机械手、传送带或伺服送料系统实现管材的自动装载和卸料，减少人工干预。
- 安全与稳定性强，多重防护，系统实时监控设备状态，异常时自动报警并停机。
- 相比传统手动切管机，自动机型在效率精度和人力成本上具有显著优势。

- ▷ The automatic loading and unloading of pipes are achieved through mechanical hands, conveyor belts or servo feeding systems, reducing manual intervention.
- ▷ It features strong safety and stability, multiple protections, and the system monitors the equipment status in real time. When an abnormality occurs, it will automatically alarm and shut down.
- ▷ Compared with traditional manual pipe cutting machines, automatic models have significant advantages in terms of efficiency, accuracy and labor costs

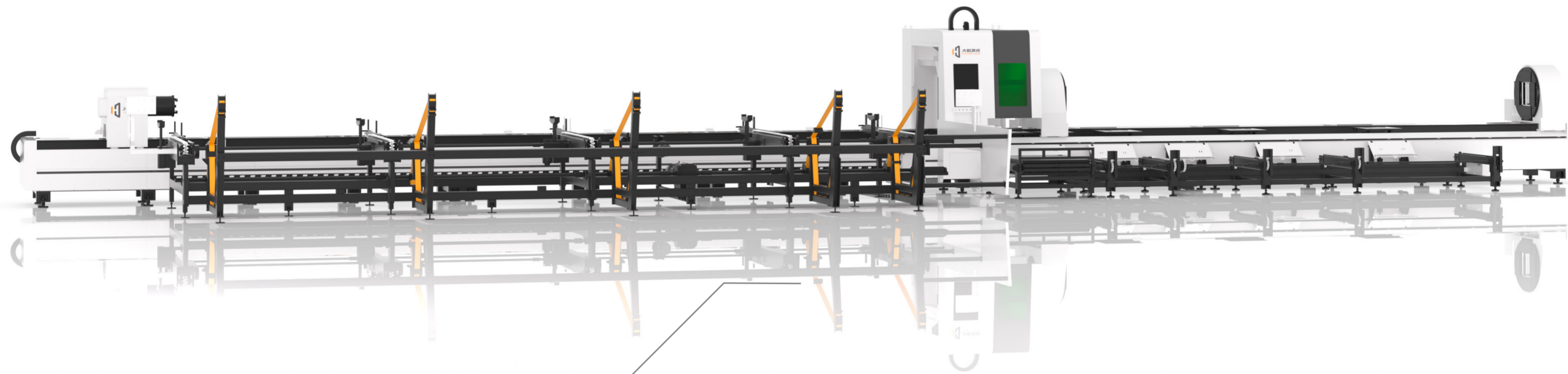
• 产品参数 SPECIFICATION

型号	Model	DH-6012	DH-6023	DH-6035
切割范围	Cutting range	φ48~φ120	φ10~φ230	φ10~φ350
激光功率	Laser power	3000-30000W		
重复定位精度	Repositioning accuracy	0.03mm		
最大移动速度	Max.moving speed	100m/min		

• LT系列全自动上下料三卡盘切管机

LT series fully automatic loading and unloading three-chuck pipe cutting machine

• 产品展示 PRODUCT DISPLAY



功能特点

FEATURES

- 结构简单，操作方便，激光器运行稳定，维护成本低。
- 切割速度快，效率高。
- 切割面积大，适合切割材料。
- 切割精度高，稳定性好；切割断面质量好。

▷The structure is simple, operation is convenient, the laser runs stably and the maintenance cost is low.

▷Fast cutting speed and high efficiency.

▷It has a large cutting area and is suitable for cutting materials.

▷High cutting accuracy and good stability; The quality of the cutting section is good.

• 产品参数 SPECIFICATION

型号	Model	DH-12035
切割范围	Cutting range	φ10~φ350
激光功率	Laser power	3000W~30000W
重复定位精度	Repositioning accuracy	0.05mm
最大移动速度	Max.moving speed	60m/min

• DT系列全自动上下料侧挂三卡盘切管机

DTseries fully automatic loading and unloading side-hanging three-chuck pipe cutting machine

• 产品展示 PRODUCT DISPLAY



功能特点

FEATURES

- 三个独立卡盘协同工作，确保长管材在切割过程中的高稳定性，避免振动或偏移。
- 高效率、高精度、灵活性和安全性强。
- 自动化上下料机械手或输送带实现管材的连续供料和成品收集，减少人工干预。

- ▷ Three independent chucks work in coordination to ensure high stability of long pipes during the cutting process and prevent vibration or displacement.
- ▷ High efficiency, high precision, strong flexibility and safety.
- ▷ Automated loading and unloading manipulators or conveyor belts enable continuous feeding of pipes and collection of finished products, reducing manual intervention.

• 产品参数 SPECIFICATION

型号	Model	DH-12035	DH-12055
切割范围	Cutting range	φ10~φ350	φ40~φ550
激光功率	Laser power	6000W~30000W	
重复定位精度	Repositioning accuracy	0.05mm	
最大移动速度	Max.moving speed	60m/min	

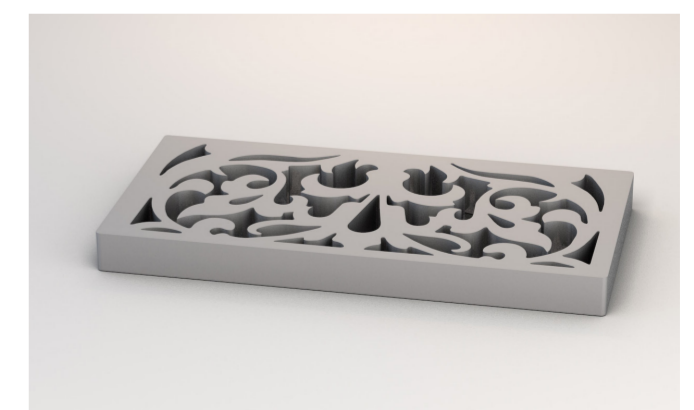
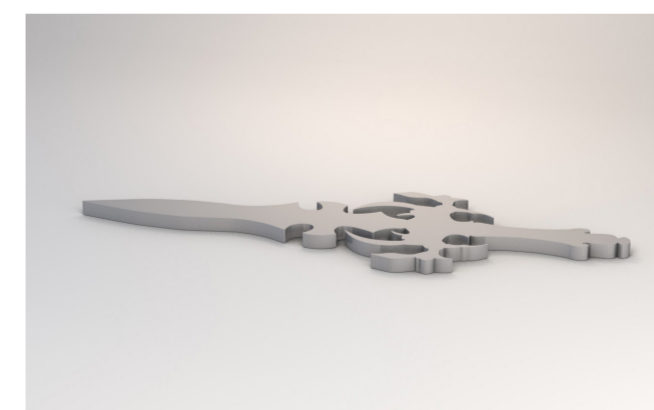
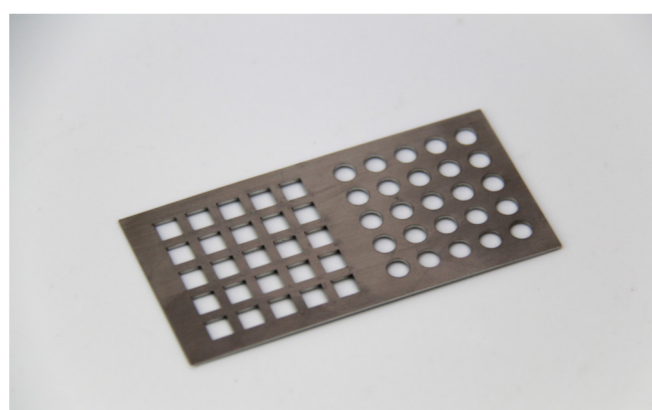
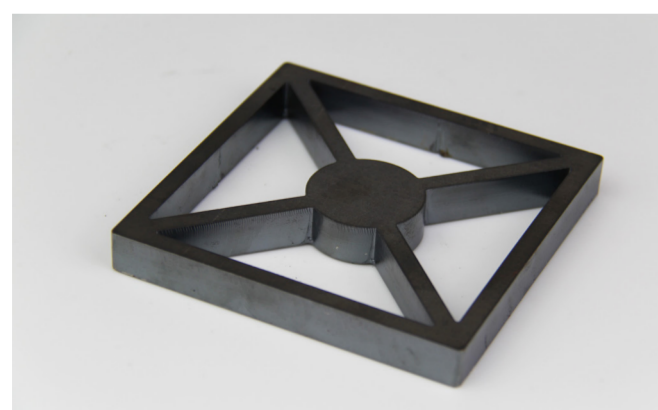
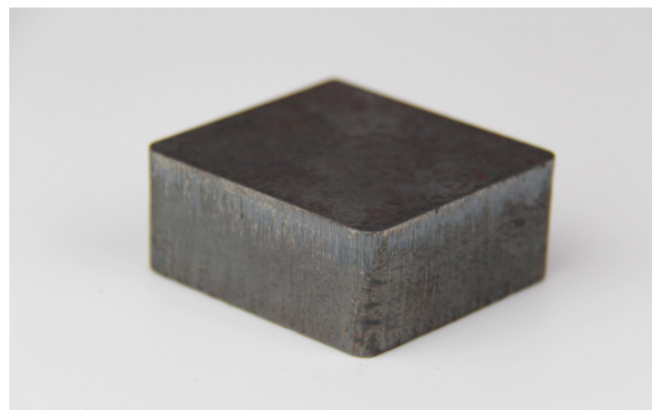
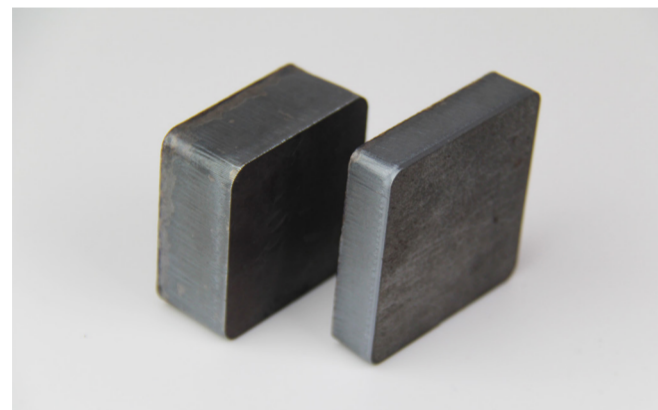
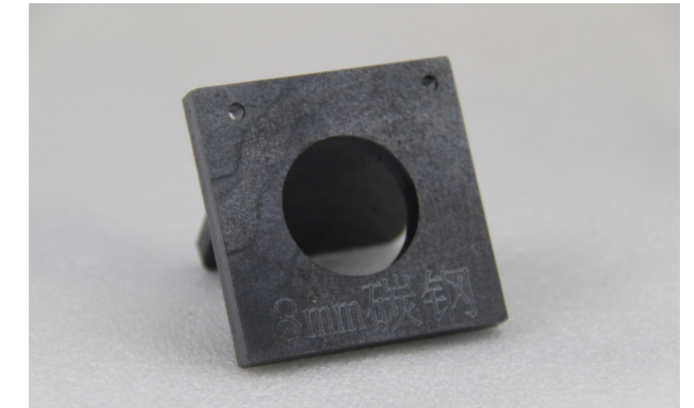
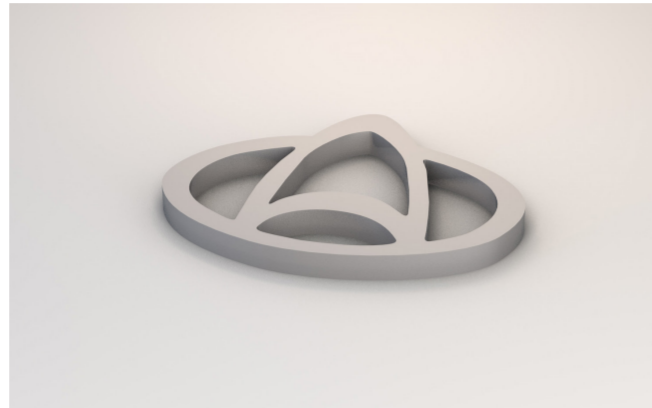
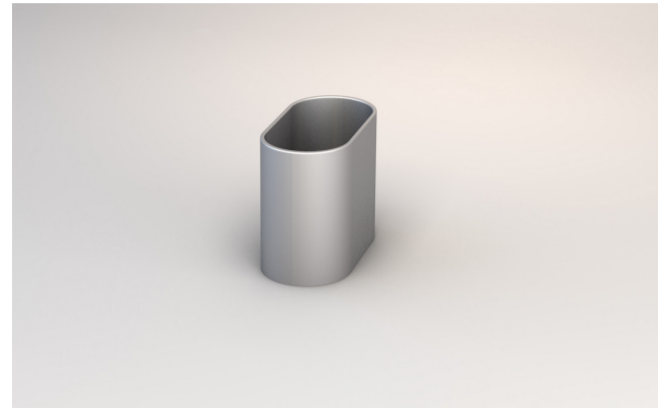
 切割参数  
Cutting parameters

材料 Material	厚度 Thickness (mm)	3000W	6000W	12000W	20000W	30000W	厚度 Thickness (mm)	60000W	80000W	120000W
		切割速度 Speed (m/min)	切割速度 Speed (m/min)	切割速度 Speed (m/min)	切割速度 Speed (m/min)	切割速度 Speed (m/min)		切割速度 Speed (m/min)	切割速度 Speed (m/min)	切割速度 Speed (m/min)
碳钢 Carbon steel (Q235B)	1	28-35	45-60	50-60	50-60	50-60	16	13-14	14-16	
	2	16-20	35-40	45-50	45-50	45-50	18	11-12	12-14	
	3	3.2-3.6	22-27	40-50	40-50	40-50	20	9-10	10-12	
	4	3-3.2	15-20	30-35	30-35	30-35	25	6.5-7.5	8-9	
	5	2.7-3	9-12	20-28	23-28	22-30	30	4.5-5.5	7-8	5.5-6.5
	6	2.2-2.5	8-10	16-20	18-20	18-22	35	3.5-4.4	5-6	
	8	1.8-2.2	2.2-2.4	12-15	14-16	14-16	40	2.8-3.4	4-5	5-6
	10	1-1.3	2.0-2.2	8-9	9-12	12-15	45	2-2.5	4-4.5	
	12	0.9-1	0.9-1	5-6.5	8-10	10-12	50	1.5-2	3-4	2.5-3.5
	14	0.8-0.9	1.4-1.6	1.6-1.9	6-8	8-10	55			
	16	0.6-0.7	1.2-1.4	1.4-1.6	5-6	7-8	60	1-1.4	2-2.5	2-2.5
	18	0.5-0.6	0.8	1.4-1.5	3.2-4	5.5-6	65			
	20	0.4-0.55	0.6-0.8	1.2-1.4	2.7-3.2	4.5-5.5	70	0.7-0.8	1.2-1.4	
	22	0.45-0.5	0.5-0.6	1-1.2	1.4-1.5	3.8-4.3	80	0.6-0.7	1-1.2	1.3-1.5
	25		0.55	0.8-1.1	1.2-1.4	2.8-2.2	90		0.8-1	
	30		0.3	0.4-0.5	1.2-1.3	1.2-1.3	100	0.5-0.6	0.7-0.9	1-1.2
	40			0.3-0.35	0.6-0.9	0.6-0.9	120		0.45-0.6	
	50				0.2-0.3	0.6-0.8	150			0.4-0.5
60				0.2-0.25	0.2-0.25	160	0.15-0.25	0.3-0.35		
70				0.18-0.2	0.18-0.2	200	0.15-0.2	0.15-0.2	0.3-0.35	
80				0.12-0.15	0.12-0.15	270			0.1-0.15	
不锈钢 Stainless steel (SUS304)	1	28-35	45-60	50-60	50-60	50-60	20	7-9	10-11	
	2	18-24	35-45	45-50	50-60	50-60	25	5.5-6.5	8-9	
	3	7-10	22-27	30-35	40-45	40-50	30	4-5.5	6-7	
	4	5-6.5	15-20	24-28	30-35	35-40	35	3.5-4.5	4-5	
	5	3-3.6	9-12	15-18	22-24	25-30	40	2.5-3.5	3.5-4	
	6	2-2.7	8-11	13-15	18-22	22-25	45			
	8	1-1.2	3.5-4.5	8-10	13-16	18-22	50	1.6-2	2-3	
	10	0.5-0.6	2-2.5	6.5-7.5	10-12	13-16	55			
	12		1.5-1.8	5-5.5	8-10	10-12	60	1.3-1.6	1.6-2	
	14		1-1.5	3-3.5	6-8	8-10	65	1-1.2		
	16		0.5-0.6	2-2.3	5-6	7-8	70	0.8-1	1-1.5	
	18		0.3-0.5	1.3-1.5	3.2-4	6-7	75			
	20		0.2-0.25	1.2-1.4	3-3.2	4-5	80	0.5-0.7	0.8-1	
	25			0.7-0.9	1.5-2	2-2.5	85			
	30			0.25-0.3	1-1.2	1.2-2	90	0.4-0.5	0.7-0.8	
	40			0.15-0.2	0.5-0.8	0.6-0.8	90(Modulation)	0.2-0.25	0.3-0.35	
	50			0.2-0.3	0.2-0.3	0.2-0.3	100	0.3-0.5	0.5-0.7	
	60				0.15-0.2	0.15-0.2	100(Modulation)	0.15-0.2	0.25-0.35	
70				0.1-0.13	0.1-0.13	120	0.2-0.3	0.35-0.45		
80				0.08-0.1	0.08-0.1	130	0.18-0.25	0.25-0.35		
90				0.05-0.06	0.05-0.06	140	0.15-0.2	0.18-0.25		
100				0.04-0.05	0.04-0.05	150	0.12-0.15	0.15-0.18		

材料 Material	厚度 Thickness (mm)	3000W	6000W	12000W	20000W	30000W	60000W	80000W	120000W
		切割速度 Speed (m/min)	切割速度 Speed (m/min)	切割速度 Speed (m/min)	切割速度 Speed (m/min)	切割速度 Speed (m/min)	切割速度 Speed (m/min)	切割速度 Speed (m/min)	切割速度 Speed (m/min)
铝 Aluminum	1	25-30	45-60	50-60	55-60	55-60	50-55	55-60	60-65
	2	15-18	35-40	35-40	40-45	40-45	45-50	50-55	55-60
	3	7-8	22-27	30-35	30-35	30-35	40-45	45-50	50-55
	4	5-6	14-17	25-30	25-30	25-30	35-40	40-45	45-50
	5	2.5-3	9-11	20-25	18-20	18-25	30-35	35-40	40-45
	6	1.5-2	4-6	14-18	16-18	18-20	25-30	30-35	35-40
	8	0.6-0.7	2.5-3	7-9	10-12	15-18	20-25	25-30	30-35
	10		1.5-1.8	5-7	9-10	12-15	18-22	20-25	25-30
	12		0.8-1	3-4	5-6	10-12	14-17	18-22	20-25
	14		0.6-0.7	1.8-2.8	4-5	8-10	11-13	14-17	18-22
	16		0.35-0.45	1.5-1.8	3-4	6-8	9-11	11-13	14-17
	18		0.2-0.3	1-1.5	2-3	3-4	7-9	9-11	11-13
	20		0.2-0.3	0.8-1.2	1.5-2	2-3	5-7	7-9	9-11
	25			0.5-0.7	1-1.2	1.5-2	4-5	5-7	7-9
	30			0.25-0.3	0.8-1	0.8-1	3-3.5	4-5	5-7
	40			0.15-0.2	0.5-0.8	0.5-0.8	2-3	3-3.5	4-5
	50				0.4-0.6	0.4-0.6	1-1.5	2-3	3-3.5
	60				0.2-0.3	0.2-0.3	0.4-0.6	1-1.5	2-3
70						0.2-0.3	0.4-0.6	1-1.5	
80						0.2-0.25	0.2-0.3	0.4-0.6	
90						0.15-0.2	0.2-0.25	0.2-0.3	
100						0.12-0.15	0.15-0.2	0.2-0.25	
105						0.08-0.1	0.12-0.15	0.15-0.2	
110							0.08-0.1	0.12-0.15	
115								0.08-0.1	
黄铜 Brass	1	20-28	45-55	40-50	40-45	40-45	50-55	55-60	60-65
	2	10-15	30-35	34-45	35-40	35-40	45-50	50-55	55-60
	3	5-6	18-25	25-30	28-30	28-30	40-45	45-50	50-55
	4	2.5-3	12-15	20-25	19-22	20-25	35-40	40-45	45-50
	5	1.8-2.2	4.5-6	16-20	18-19	18-20	30-35	35-40	40-45
	6	0.8-1	3.5-4	12-15	12-15	15-18	25-30	30-35	35-40
	8		2-2.6	6-8	8-10	10-15	20-25	25-30	30-35
	10		1-1.3	4-5.5	7-8	8-10	18-22	20-25	25-30
	12		0.6-0.8	1.8-2	2.5-3.5	5-8	10-14	18-22	20-25
	14			1.2-1.4	2-2.5	3-5	8-11	10-14	18-22
	16			0.8-1	1.5-2	1.5-2	6-8	8-11	10-14
	18				1.2-1.5	1.2-1.5	5-7	6-8	8-11
	20				0.8-1	0.8-1	4-5	5-7	6-8
	25						3-4	4-5	5-7
	30						2.5-3	3-4	4-5
	35						2-2.5	2.5-3	3-4
	40							2-2.5	2.5-3
	45								2-2.5

切割样品

# CUTTING SAMPLES



Strive for excellence



• 风冷激光焊接机

Air cooled laser welding machine



功能特点

FEATURES

- 无需外接水冷系统，节省空间与成本：采用空气冷却技术，省去复杂的水冷装置及配套管路，设备结构紧凑，安装维护简便，且无需消耗冷却水，降低了初始投入和运行成本。
- 环境适应性强，便于移动与集成：无冷却水依赖，可在缺水或温度敏感环境中稳定工作；设备轻量化设计便于移动，适合多工位轮换使用或集成至柔性生产线。
- 节能环保且维护简单：风冷系统能耗通常低于水冷系统，运行噪音较低；同时避免了水垢、泄漏、防冻等问题，减少了定期维护需求，提升了设备长期可靠性。

▷No External Water Cooling System Required, Saving Space and Cost: Utilizing air-cooling technology eliminates the need for complex water chillers and associated piping. The equipment features a compact design with simple installation and maintenance, and requires no cooling water consumption, reducing both initial investment and operational costs.

2. Strong Environmental Adaptability and Ease of Mobility/Integration: With no reliance on cooling water, it can operate stably in water-scarce or temperature-sensitive environments. The lightweight design facilitates mobility, making it suitable for multi-station rotation or integration into flexible production lines.

3. Energy-Efficient, Eco-Friendly, and Low Maintenance: Air-cooling systems generally consume less energy than water-cooling systems and operate with lower noise levels. They also avoid issues such as scaling, leakage, and antifreeze requirements, reducing the need for regular maintenance and enhancing long-term reliability.

• 产品展示

PRODUCT DISPLAY



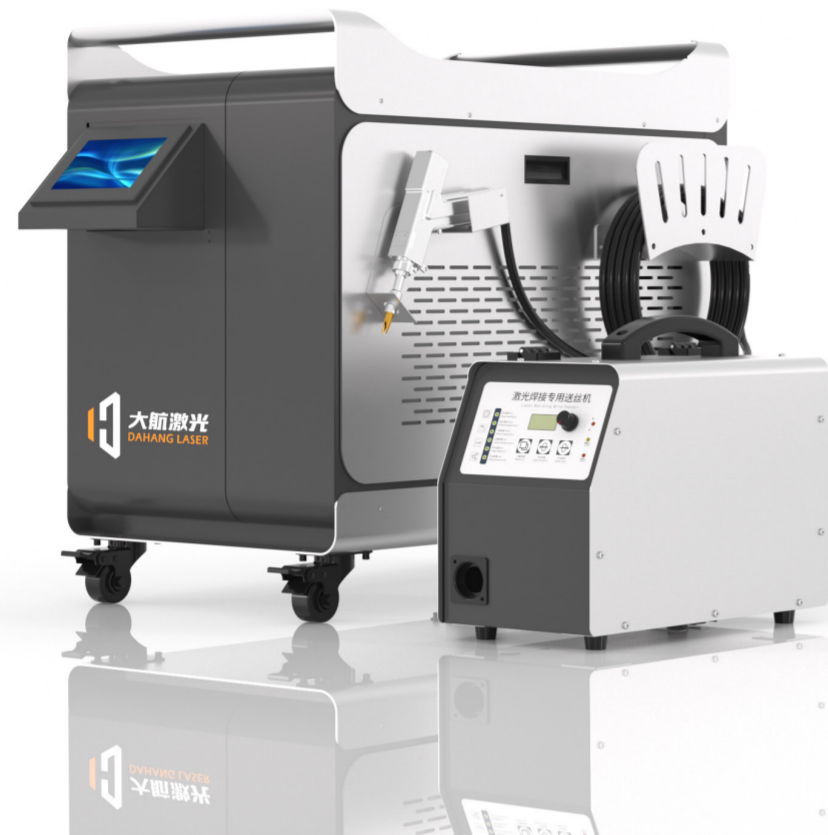
• 产品参数

SPECIFICATION

型号	Model	DH-1500W	DH-2000W
额定输出功率	Rated output power	1500W	2000W
输出光纤长度	Output fiber length	10m(20m/ Customizable )	
焊接厚度	Welding thickness	0.3mm~3mm	0.3mm~4mm
电力需求	Voltage	220V±10V	220V±10V
指示光	Indicator light	红光 Red Light	
冷却方式	Cooling method	风冷 Wind cooling	
最大支持气压	Max pressure	10bar	
整机功率	Total Power	6KW	8KW
工作模式	Working model	连续/调制 Continuous / Modulation	
安放环境	Working environment	平整，无振动和冲击 Flat, no vibration and shock	
工作湿度 (%)	Working humidity	< 70%	
工作环境温度 (°C)	Operating temperature	-20~40°C	
整体尺寸	Overall size	610*390*570mm	740*390*570mm
机身净重	Net fuselage weight	41kg	50kg

• 便携式激光焊接机

Portable laser welding machine



功能特点

FEATURES

- 持续高功率输出，温度控制精准。
- 热影响区小，焊缝均匀美观；光束质量稳定，焊缝熔深一致，表面光滑，减少后续打磨工序。

- ▷ Continuous high power output and precise temperature control
- ▷ The heat-affected zone is small, and the weld seam is uniform and beautiful. The beam quality is stable, the weld penetration is consistent, the surface is smooth, and the subsequent grinding process is reduced

• 产品展示 PRODUCT DISPLAY



• 产品参数 SPECIFICATION

型号	Model	DH-1500W	DH-2000W	DH-3000W	DH-6000W
额定输出功率	Rated output power	1500W	2000W	3000W	6000W
输出光纤长度	Output fiber length	10m(20m/ Customizable )			
焊接厚度	Welding thickness	0.3~4mm	0.3~5mm	0.3~8mm	0.3~12mm
电力需求	Voltage	220V±10V	220V±10V	380V±10V	380V±10V
指示光	Indicator light	红光 Red Light			
冷却方式	Cooling method	水冷 Water cooling			
最大支持气压	Max pressure	10bar			
整机功率	Total Power	6KW	8KW	12KW	24KW
工作模式	Working model	连续/调制 Continuous / Modulation			
安放环境	Working environment	平整, 无振动和冲击 Flat, no vibration and shock			
工作湿度 (%)	Working humidity	< 70%			
工作环境温度 (°C)	Operating temperature	-10~45°C			
整体尺寸	Overall size	1000*600*820mm	1050*720*920mm	1418*730*1219mm	
机身净重	Net fuselage weight	128kg	135kg	181kg	244kg

• 光纤激光清洗机

Laser Cleaning Machine



功能特点

FEATURES

- 高效节能与高电光转换效率：光纤激光器拥有超过30%的高电光转换效率，能量利用率高，能耗显著低于传统激光器（如YAG），大幅降低运行成本。
- 光束质量优且灵活可靠：通过柔性光纤传输激光，可实现远距离、多维度灵活加工，尤其适合复杂轨迹或难以接近的工位；光束质量高，聚焦光斑小，能量密度集中，焊接精度与深度优势明显。
- 稳定性强且维护简便：全固态光纤结构，无光学透镜调整或气体耗材需求，抗环境干扰能力强，日常维护简单，使用寿命长，适合工业连续生产。

▷ High Efficiency and Energy Saving with Superior Electro-Optical Conversion: Fiber lasers offer high electro-optical conversion efficiency (typically over 30%), leading to excellent energy utilization and significantly lower power consumption compared to traditional lasers (e.g., YAG), greatly reducing operating costs.

▷ Excellent Beam Quality with Enhanced Flexibility and Reliability: Laser delivery via flexible optical fibers enables long-distance and multi-axis processing, making it especially suitable for complex paths or hard-to-reach areas. The high beam quality results in a small focused spot and concentrated energy density, providing outstanding welding precision and depth.

▷ High Stability with Low Maintenance: The all-solid-state fiber design requires no optical lens adjustments or consumable gases. It offers strong resistance to environmental interference, simple daily maintenance, and a long service life, making it ideal for continuous industrial production.

• 产品展示 PRODUCT DISPLAY

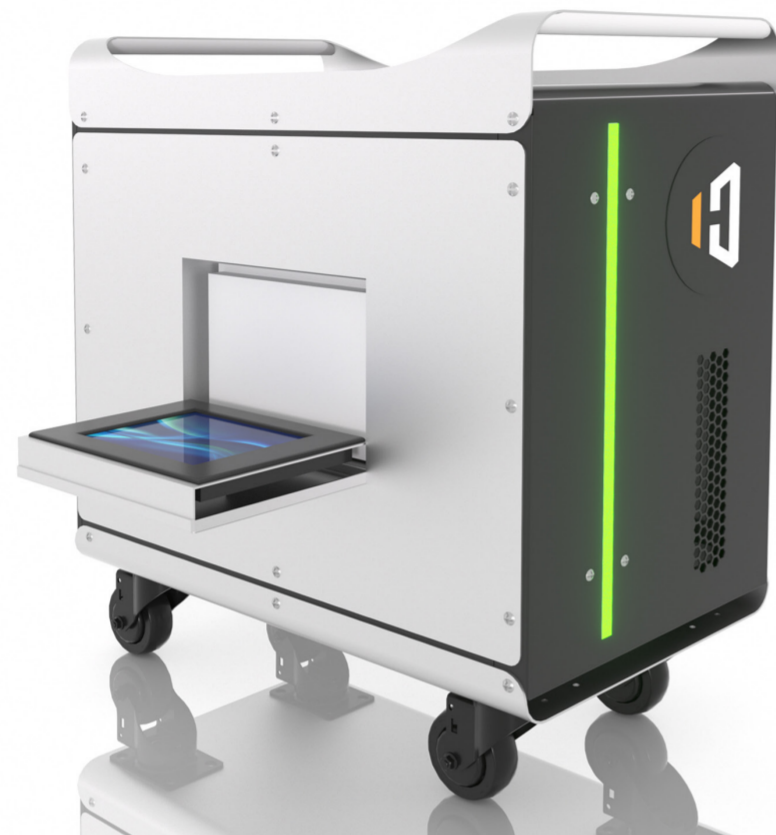


• 产品参数 SPECIFICATION

型号	Model	DH-1500W	DH-2000W	DH-3000W	DH-6000W
额定输出功率	Rated output power	1500W	2000W	3000W	6000W
输出光纤长度	Output fiber length	10m(20m/ Customizable )			
清洗效率	Cleaning efficiency	40m²/h	60m²/h	80m²/h	150m²/h
电力需求	Voltage	220V±10V	220V±10V	380V±10V	380V±10V
指示光	Indicator light	红光 Red Light			
冷却方式	Cooling method	水冷 Water cooling			
最大支持气压	Max pressure	10bar			
扫描宽度	Run-length	300MM	300MM	300MM	500MM
工作模式	Working model	连续/调制 Continuous / Modulation			
安放环境	Working environment	平整, 无振动和冲击 Flat, no vibration and shock			
工作湿度 (%)	Working humidity	< 70%			
工作环境温度 (°C)	Operating temperature	-10~45°C			
整体尺寸	Overall size	1000*600*820mm	1050*720*920mm	1418*730*1219mm	
机身净重	Net fuselage weight	128kg	135kg	181kg	244kg

• 脉冲激光清洗机

Pulsed Laser Cleaning Machine



功能特点

FEATURES

- 非接触式无损清洗：脉冲激光清洗不直接接触工件表面，避免对基底材料造成机械损伤或化学残留，尤其适用于精密、脆弱或高价值工件的清洁。
- 精准选择性与环保性：通过调节参数（如波长、脉宽），可选择性去除污染物（如锈层、油漆、氧化膜）而不损伤基材，且无需化学溶剂，无二次污染，符合绿色制造要求。
- 高效灵活与自动化适配：清洗速度快，可针对复杂曲面或细微结构实现局部精准清洗，易于集成自动化系统，提升清洁效率与工艺一致性。

▷ Non-Contact and Non-Destructive Cleaning: Pulsed laser cleaning operates without physical contact with the workpiece surface, avoiding mechanical damage or chemical residue on the base material, making it especially suitable for precision, fragile, or high-value components.

▷ Precise Selectivity and Environmental Friendliness: By adjusting parameters (e.g., wavelength, pulse width), contaminants (such as rust, paint, oxide layers) can be selectively removed without harming the substrate. The process requires no chemical solvents, generates no secondary pollution, and aligns with green manufacturing standards.

▷ High Efficiency, Flexibility, and Automation Compatibility: Fast cleaning speed enables precise local cleaning of complex contours or microstructures. It is easily integrated into automated systems, enhancing cleaning efficiency and process consistency.

• 产品展示 PRODUCT DISPLAY



• 产品参数 SPECIFICATION

型号	Model	DH-200W	DH-300W	DH-500W	DH-1000W
额定输出功率	Rated output power	200W	300W	500W	1000W
输出光纤长度	Output fiber length	5m(10m/ Customizable )			
清洗效率	Cleaning efficienc	6m²/h	9m²/h	12m²/h	15m²/h
电力需求	Voltage	220V±10V			
指示光	Indicator light	红光 Red Light			
冷却方式	Cooling method	风冷 Air cooling			
最大支持气压	Max pressure	10bar			
工作模式	Working model	连续/调制 Continuous / Modulation			
安放环境	Working environment	平整, 无振动和冲击 Flat, no vibration and shock			
工作湿度 (%)	Working humidity	< 70%			
工作环境温度 (°C)	Operating temperature	-10~45°C			
整体尺寸	Overall size	516*320*390mm	800*400*650mm	1000*600*820mm	
机身净重	Net fuselage weight	29kg	31kg	43kg	120kg

• 机械臂光纤激光焊接机

Robotic arm fiber laser welding machine



功能特点

FEATURES

- 高精度与一致性：激光焊接机器人能够实现微米级精度的焊接，重复定位精度高，确保批量生产中焊缝质量稳定均匀。
- 高效灵活：焊接速度快，适用于自动化产线，同时通过编程可快速适应不同工件与复杂路径的焊接需求。
- 加工质量优：激光能量集中，热影响区小，能减少工件变形，尤其适合精密或薄壁部件的焊接。

- ▷ High Precision and Consistency: Laser welding robots achieve micron-level welding accuracy with high repeatability, ensuring stable and uniform weld quality in mass production.
- ▷ High Efficiency and Flexibility: With fast welding speeds, they are suitable for automated production lines and can be quickly reprogrammed to adapt to different workpieces and complex welding paths.
- ▷ Superior Processing Quality: The concentrated laser energy results in a small heat-affected zone, minimizing workpiece deformation, making it particularly suitable for precision or thin-walled components.

• 产品展示 PRODUCT DISPLAY



• 产品参数 SPECIFICATION

型号	Model	DH-1500W	DH-2000W	DH-3000W
额定输出功率	Rated output power	1500W	2000W	3000W
输出光纤长度	Output fiber length	10m(20m/ Customizable )		
焊接厚度	Welding thickness	0.3~4mm	0.3~5mm	0.3~8mm
电力需求	Voltage	220V±10V	220V±10V	380V±10V
指示光	Indicator light	红光 Red Light		
冷却方式	Cooling method	水冷 Water cooling		
最大支持气压	Max pressure	10bar		
整机功率	Total Power	16KW	18KW	22KW
工作模式	Working model	连续/调制 Continuous / Modulation		
安放环境	Working environment	平整, 无振动和冲击 Flat, no vibration and shock		
工作湿度 (%)	Working humidity	< 70%		
工作环境温度 (°C)	Operating temperature	-10~45°C		
整体尺寸	Overall size	2200*1100*1300mm		
机身净重	Net fuselage weight	228kg	235kg	281kg

• 工业激光焊接安全防护屋

Industrial Laser Welding protection house



功能特点

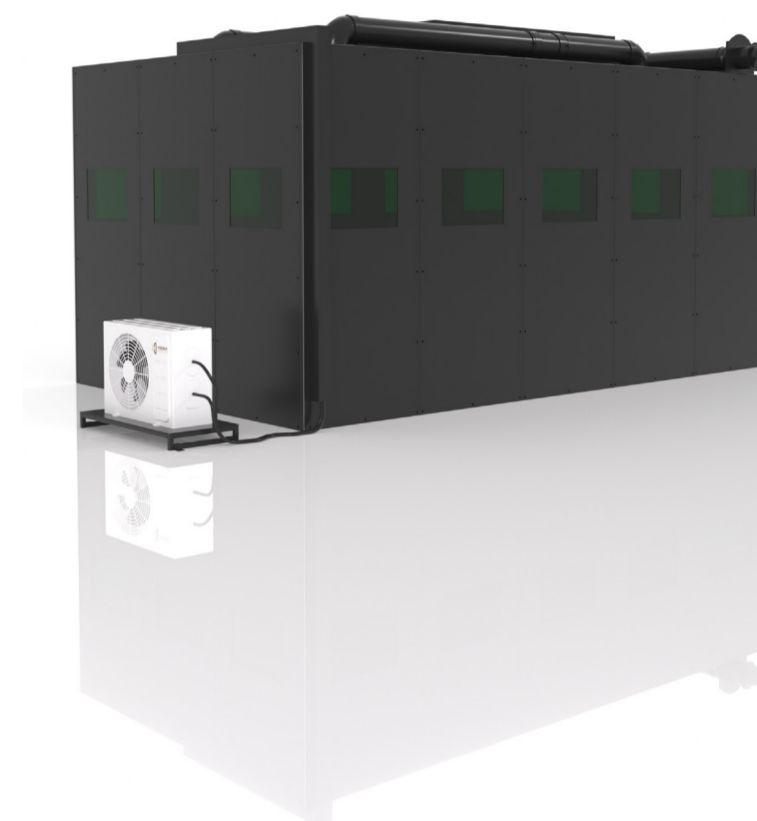
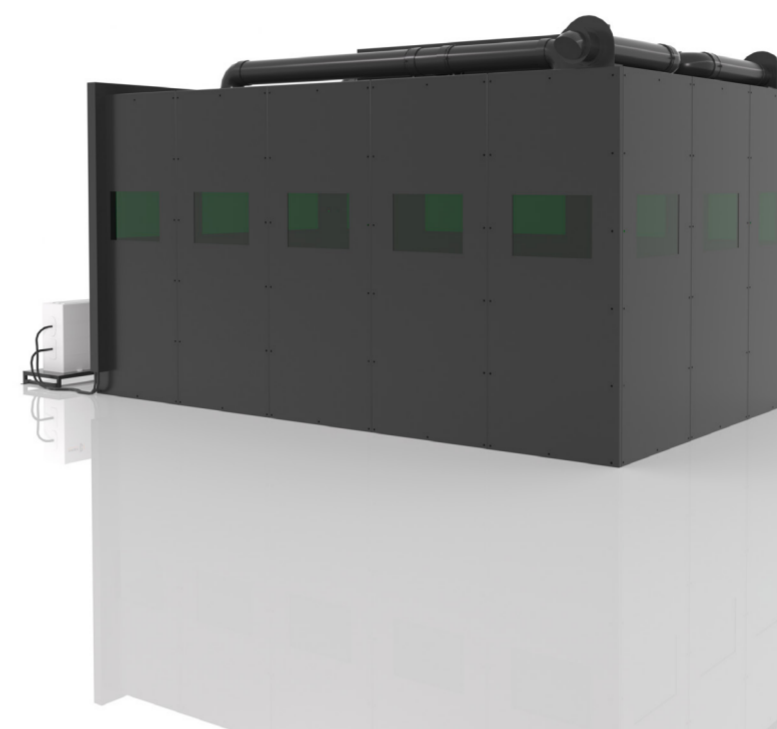
FEATURES

- 充分利用最新的激光焊接技术，同时保护您的员工免受健康风险。
- 激光防护罩公司拥有多年机器和工艺防护经验，我们专有的系统将为您提供经济高效且坚固耐用的解决方案，其模块化设计可满足未来的扩展需求。

▷ Take advantage of the latest laser welding technologies whilst protecting your employees from the health risks.

▷ Laser Enclosures draw upon years of machine and process guarding experience and our proprietary system will give you a cost effective and robust solution that has the modularity to allow future expansion.

• 产品展示 PRODUCT DISPLAY



• 产品参数 SPECIFICATION

型号	Model	DH-A3030	DH-A3050	DH-A3080	DH-A30100
工作面积	Working area	3000*3000	3000*5000	3000*8000	3000*10000
新风系统	Outdoor air system	included			
空调	Air conditioner	included			
光密度	Optical density	930-1050nm OD>6		1050-1100nm OD>7	
防护性能	LB-Rating	930-1050nm D AB6+IR AB7		1050-1100nm D AB5+IR AB7	

一、碳钢/镀锌板 C.S/Galvanized sheet

材料 Material	厚度mm Thickness	扫描速度 Scanning speed	扫描宽度 Scanning width	功率 Power	焊丝型号 No.wire	焊接角度 welding angle	形态 condition
碳钢 C.S	1	300	2.5	380	ER1.0	平焊flat welding	全透penetration
	1	300	2.5	380	ER1.0	内角interiorangle	熔透 80%
	1	300	2.5	380	ER1.0	外角exterior angle	全透penetration
	0.5	300	2.5	250	ER0.8	平焊flat welding	熔透 80%
	0.5	300	2.5	250	ER0.8	内角interiorangle	全透penetration
	0.5	300	2.5	250	ER0.8	外角exterior angle	熔透 80%
	2	300	3	800	ER1.2	平焊flat welding	全透penetration
	2	300	3	800	ER1.2	内角interiorangle	熔透 80%
	2	300	3	800	ER1.2	外角exterior angle	全透penetration
	3	300	3.5	1200	ER1.2	平焊flat welding	熔透 80%
	3	300	3.5	1200	ER1.2	内角interiorangle	全透penetration
	3	300	3.5	1200	ER1.2	外角exterior angle	熔透 80%
	4	250	4.5	1500	ER1.6	平焊flat welding	全透penetration
	4	250	4.5	1500	ER1.6	内角interiorangle	熔透 80%
	4	250	4.5	1500	ER1.6	外角exterior angle	全透penetration
	5	250	5.5	1700	ER1.6	平焊flat welding	熔透 80%
	5	250	5.5	1700	ER1.6	内角interiorangle	全透penetration
	5	250	5.5	1700	ER1.6	外角exterior angle	熔透 80%
	6	200	6	2000	ER1.6	平焊flat welding	全透penetration
	6	200	6	2000	ER1.6	内角interiorangle	熔透 80%
	6	200	6	2000	ER1.6	外角exterior angle	全透penetration
	7	150	6	2500	ER1.6	平焊flat welding	熔透 80%
	7	150	6	2800	ER1.6	内角interiorangle	全透penetration
	7.5	100	6	3000	ER1.6	平焊flat welding	熔透 80%
	7.5	100	6	3000	ER1.6	内角interiorangle	全透penetration
	10	150	12	6000	ER1.6	平焊flat welding	熔透 80%
	10	150	8	6000	ER2.0	内角interiorangle	全透penetration
	10	150	8	6000	ER2.0	外角exterior angle	熔透 80%
12	100	12	6000	ER1.6	平焊flat welding	全透penetration	
12	100	8	6000	ER2.0	内角interiorangle	熔透 80%	
12	100	8	6000	ER2.0	外角exterior angle	全透penetration	

二、不锈钢 S.S

材料 Material	厚度mm Thickness	扫描速度 Scanning speed	扫描宽度 Scanning width	功率 Power	焊丝型号 No.wire	焊接角度 welding angle	形态 condition
不锈钢 S.S	1	300	2.5	380	ER1.0	平焊flat welding	全透penetration
	1	300	2.5	380	ER1.0	内角interiorangle	熔透 80%
	1	300	2.5	380	ER1.0	外角exterior angle	全透penetration
	0.5	300	2.5	250	ER0.8	平焊flat welding	熔透 80%
	0.5	300	2.5	250	ER0.8	内角interiorangle	全透penetration
	0.5	300	2.5	250	ER0.8	外角exterior angle	熔透 80%
	2	300	3	800	ER1.2	平焊flat welding	全透penetration
	2	300	3	800	ER1.2	内角interiorangle	熔透 80%
	2	300	3	800	ER1.2	外角exterior angle	全透penetration
	3	300	3.5	1200	ER1.2	平焊flat welding	熔透 80%
	3	300	3.5	1200	ER1.2	内角interiorangle	全透penetration
	3	300	3.5	1200	ER1.2	外角exterior angle	熔透 80%
	4	250	4.5	1500	ER1.6	平焊flat welding	全透penetration
	4	250	4.5	1500	ER1.6	内角interiorangle	熔透 80%
	4	250	4.5	1500	ER1.6	外角exterior angle	全透penetration
	5	250	5.5	1700	ER1.6	平焊flat welding	熔透 80%
	5	250	5.5	1700	ER1.6	内角interiorangle	全透penetration
	5	250	5.5	1700	ER1.6	外角exterior angle	熔透 80%
	6	200	6	2000	ER1.6	平焊flat welding	全透penetration
	6	200	6	2000	ER1.6	内角interiorangle	熔透 80%
	6	200	6	2000	ER1.6	外角exterior angle	全透penetration
	7	150	6	2500	ER1.6	平焊flat welding	熔透 80%
	7	150	6	2800	ER1.6	内角interiorangle	全透penetration
	7.5	100	6	3000	ER1.6	平焊flat welding	熔透 80%
	7.5	100	6	3000	ER1.6	内角interiorangle	全透penetration
	10	150	12	6000	ER1.6	平焊flat welding	熔透 80%
	10	150	8	6000	ER2.0	内角interiorangle	全透penetration
	10	150	8	6000	ER2.0	外角exterior angle	熔透 80%
12	100	12	6000	ER1.6	平焊flat welding	全透penetration	
12	100	8	6000	ER2.0	内角interiorangle	熔透 80%	
12	100	8	6000	ER2.0	外角exterior angle	全透penetration	

三、铝 A.L

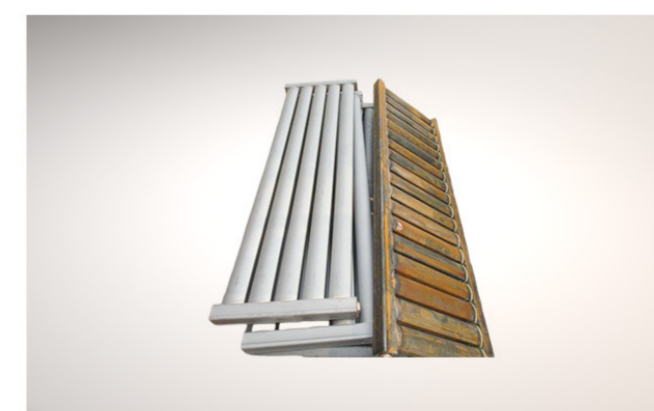
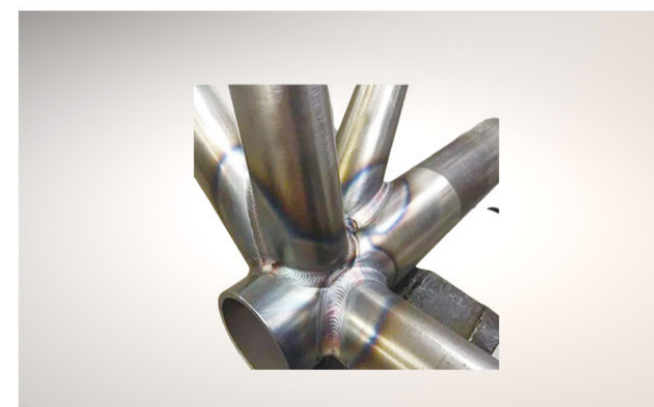
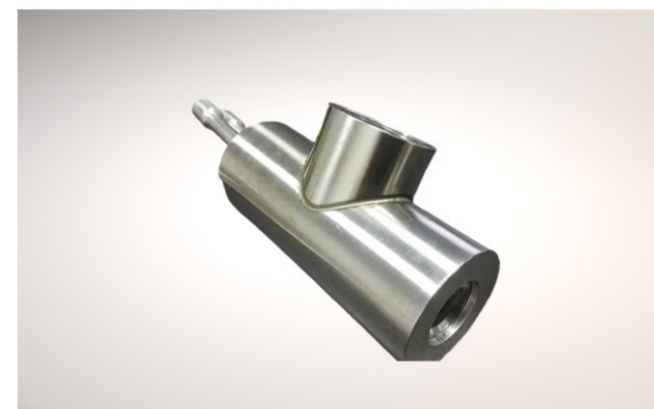
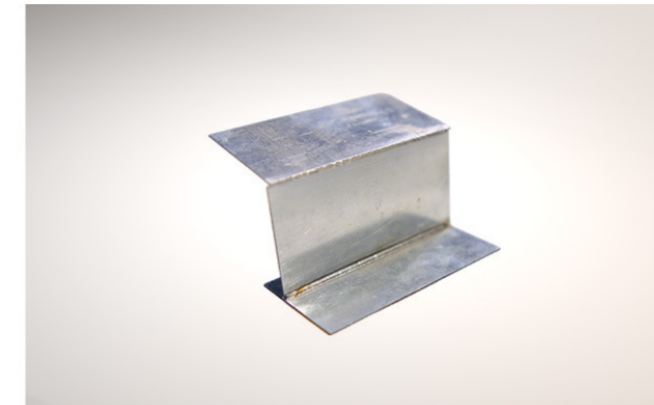
材料 Material	厚度mm Thickness	扫描速度 Scanning speed	扫描宽度 Scanning width	功率 Power	焊丝型号 No.wire	焊接角度 welding angle	形态 condition
铝 A.L	1	250	2.5	500	ER304.1.0	平焊flat welding	全透penetration
	1	250	2.5	500	ER304.1.0	内角interiorangle	熔透 80%
	1	250	2.5	500	ER304.1.0	外角exterior angle	全透penetration
	2	200	2.5	1000	ER304.0.8	平焊flat welding	熔透 80%
	2	200	2.5	1000	ER304.0.8	内角interiorangle	全透penetration
	2	200	2.5	1000	ER304.0.8	外角exterior angle	熔透 80%
	3	200	3	1500	ER304.1.2	平焊flat welding	全透penetration
	3	200	3	1500	ER304.1.2	内角interiorangle	熔透 80%
	3	200	3	1500	ER304.1.2	外角exterior angle	全透penetration
	4	120	3.5	2000	ER304.1.2	平焊flat welding	熔透 80%
	4	120	3.5	2000	ER304.1.2	内角interiorangle	全透penetration
	4	120	3.5	2000	ER304.1.2	外角exterior angle	熔透 80%
	5	120	4.5	2500	ER304.1.6	平焊flat welding	全透penetration
	5	120	4.5	2500	ER304.1.6	内角interiorangle	熔透 80%
	5	120	4.5	2500	ER304.1.6	外角exterior angle	全透penetration
	6	100	5.5	3000	ER304.1.6	平焊flat welding	熔透 80%
	6	100	5.5	3000	ER304.1.6	内角interiorangle	全透penetration
	6	100	5.5	3000	ER304.1.6	外角exterior angle	熔透 80%
	8	120	12	3000	ER304.1.6	平焊flat welding	全透penetration
	8	100	8	6000	ER304.1.6	内角interiorangle	熔透 80%
	8	100	8	6000	ER304.1.6	外角exterior angle	全透penetration
	10	120	12	6000	ER304.1.6	平焊flat welding	熔透 80%
	10	100	8	6000	ER304.1.6	内角interiorangle	全透penetration
	10	100	8	6000	ER304.1.6	外角exterior angle	熔透 80%

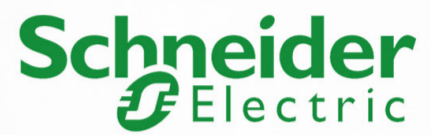
清洗工艺参数  
Cleaning process parameters

功率	扫描宽度 /mm	扫描速度 /HZ	占空比 /%	激光频率 /HZ	浮锈 /20um	油漆 /120um	锈蚀 /100um
1000W	300	40	100	2000	20	6	5
1500W	300	40	100	2000	40	8	10
2000W	300	40	100	2000	60	10	16
3000W	300	40	100	2000	80	14	20
6000W	500	40	100	2000	150	27	38

焊接/清洗样品

# WELDING/CLEANING SAMPLES





合作伙伴

COOPERATIVE PARTNER



A series of white, stylized circuit traces or lines that originate from the left edge of the page and extend horizontally towards the center. The lines are of varying lengths and some have small circular nodes at their ends, resembling a printed circuit board layout.

**DAHANG LASER**



**SERVE THE WORLD**